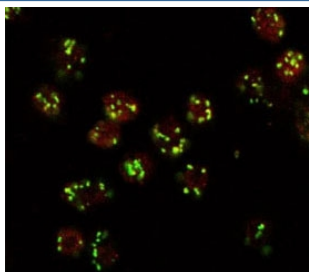


Lava lamp Antibody / Iva (R34299)

Catalog No.	Formulation	Size
R34299-100UG	0.5 mg/ml in 1X TBS, pH7.3, with 0.5% BSA (US sourced) and 0.02% sodium azide	100 ug

Bulk quote request

Availability	1-3 business days
Species Reactivity	Drosophila
Format	Antigen affinity purified
Host	Goat
Clonality	Polyclonal (goat origin)
Isotype	Goat Ig
Purity	Antigen affinity
UniProt	Q8MSS1
Gene ID	31350
Applications	Immunocytochemistry : 10ug/ml ELISA (peptide) LOD : 1:32000
Limitations	This Lava lamp antibody is available for research use only.



Drosophila S2 cells stained with Lava lamp antibody (red, AlexaFluor 555) and costained with MG130 rabbit antibody (green, AlexaFluor 488). The yellow spots indicate co-localization of the two proteins.

Description

Additional name(s) for this target protein: LVA

Application Notes

Optimal dilution of the Lava lamp antibody should be determined by the researcher.

Immunogen

Amino acids HTDAQVSAELAKQ were used as the immunogen for this Lava lamp antibody.

Storage

Aliquot and store the Lava lamp antibody at -20oC.