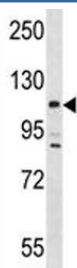


## Lats2 Antibody (F47336)

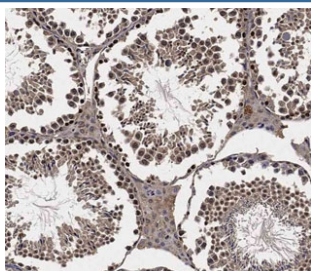
| Catalog No.   | Formulation                                | Size    |
|---------------|--------------------------------------------|---------|
| F47336-0.4ML  | In 1X PBS, pH 7.4, with 0.09% sodium azide | 0.4 ml  |
| F47336-0.08ML | In 1X PBS, pH 7.4, with 0.09% sodium azide | 0.08 ml |

[Bulk quote request](#)

|                           |                                                         |
|---------------------------|---------------------------------------------------------|
| <b>Availability</b>       | 1-3 business days                                       |
| <b>Species Reactivity</b> | Mouse                                                   |
| <b>Format</b>             | Antigen affinity purified                               |
| <b>Clonality</b>          | Polyclonal (rabbit origin)                              |
| <b>Isotype</b>            | Rabbit Ig                                               |
| <b>Purity</b>             | Antigen affinity                                        |
| <b>UniProt</b>            | Q7TSJ6                                                  |
| <b>Localization</b>       | Nuclear                                                 |
| <b>Applications</b>       | Western Blot : 1:1000<br>Immunohistochemistry : 1:100   |
| <b>Limitations</b>        | This Lats2 antibody is available for research use only. |



Lats2 antibody western blot analysis in mouse testis tissue lysate.



IHC staining of FFPE mouse testis with Lats2 antibody. HIER: boil tissue sections in pH 9 10mM Tris with 1mM EDTA for 20 min and allow to cool before testing.

## Description

Negative regulator of YAP1 in the Hippo signaling pathway that plays a pivotal role in organ size control and tumor suppression by restricting proliferation and promoting apoptosis. The core of this pathway is composed of a kinase cascade wherein MST1/MST2, in complex with its regulatory protein SAV1, phosphorylates and activates LATS1/2 in complex with its regulatory protein MOB1, which in turn phosphorylates and inactivates YAP1 oncoprotein and WWTR1/TAZ. Phosphorylation of YAP1 by LATS2 inhibits its translocation into the nucleus to regulate cellular genes important for cell proliferation, cell death, and cell migration. Acts as a tumor suppressor which plays a critical role in centrosome duplication, maintenance of mitotic fidelity and genomic stability. Negatively regulates G1/S transition by down-regulating cyclin E/CDK2 kinase activity. Negative regulator of the androgen receptor (By similarity).

## Application Notes

Titration of the Lats2 antibody may be required due to differences in protocols and secondary/substrate sensitivity.

## Immunogen

A portion of amino acids 1000-1027 from the mouse protein was used as the immunogen for this Lats2 antibody.

## Storage

Aliquot the Lats2 antibody and store frozen at -20oC or colder. Avoid repeated freeze-thaw cycles.