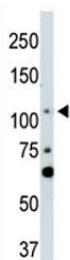


LATS2 Antibody (F40138)

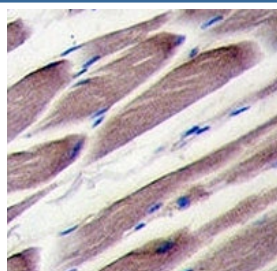
Catalog No.	Formulation	Size
F40138-0.4ML	In 1X PBS, pH 7.4, with 0.09% sodium azide	0.4 ml
F40138-0.08ML	In 1X PBS, pH 7.4, with 0.09% sodium azide	0.08 ml

[Bulk quote request](#)

Availability	1-3 business days
Species Reactivity	Human, Mouse
Format	Purified
Clonality	Polyclonal (rabbit origin)
Isotype	Rabbit Ig
Purity	Purified
UniProt	Q9NRM7
Applications	Western Blot : 1:1000 IHC (Paraffin) : 1:10-1:50
Limitations	This LATS2 antibody is available for research use only.



LATS2 antibody used in western blot to detect LATS2 in NIH3T3 cell lysate



IHC analysis of FFPE human skeletal muscle tissue stained with LATS2 antibody

Description

LATS2 is a serine/threonine protein kinase belonging to the LATS tumor suppressor family. This protein localizes to centrosomes during interphase, and early and late metaphase. It interacts with the centrosomal proteins aurora-A and ajuba and is required for accumulation of gamma-tubulin and spindle formation at the onset of mitosis. It also interacts with a negative regulator of p53 and may function in a positive feedback loop with p53 that responds to cytoskeleton damage. Additionally, it can function as a co-repressor of androgen-responsive gene expression.

Application Notes

Titration of the LATS2 antibody may be required due to differences in protocols and secondary/substrate sensitivity.

Immunogen

A portion of amino acids 228-258 from the human protein was used as the immunogen for this LATS2 antibody.

Storage

Aliquot the LATS2 antibody and store frozen at -20oC or colder. Avoid repeated freeze-thaw cycles.