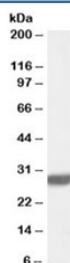


Latexin Antibody (R35518)

Catalog No.	Formulation	Size
R35518-100UG	0.5 mg/ml in 1X TBS, pH7.3, with 0.5% BSA (US sourced) and 0.02% sodium azide	100 ug

[Bulk quote request](#)

Availability	1-3 business days
Species Reactivity	Human, Mouse, Rat
Predicted Reactivity	Dog
Format	Antigen affinity purified
Host	Goat
Clonality	Polyclonal (goat origin)
Isotype	Goat Ig
Purity	Antigen affinity
Gene ID	56925
Applications	Western Blot : 0.3-1ug/ml Immunohistochemistry (FFPE) : suitable ELISA (peptide) LOD : 1:128000
Limitations	This Latexin antibody is available for research use only.



Western blot testing of rat brain lysate with Latexin antibody at 0.3ug/ml. Predicted molecular weight: 26kDa.

Description

Additional name(s) for this target protein: LXN

Application Notes

Optimal dilution of the Latexin antibody should be determined by the researcher.

Immunogen

Amino acids QYGTKVKHNSRLPKE were used as the immunogen for this Latexin antibody.

Storage

Aliquot and store the Latexin antibody at -20oC.