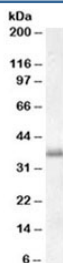


LAT1 Antibody (R34070)

Catalog No.	Formulation	Size
R34070-100UG	0.5 mg/ml in 1X TBS, pH7.3, with 0.5% BSA (US sourced) and 0.02% sodium azide	100 ug

[Bulk quote request](#)

Availability	1-3 business days
Species Reactivity	Human
Predicted Reactivity	Mouse, Rat
Format	Antigen affinity purified
Host	Goat
Clonality	Polyclonal (goat origin)
Isotype	Goat Ig
Purity	Antigen affinity
Gene ID	27040
Applications	Western Blot : 0.01-0.03ug/ml ELISA (peptide) LOD : 1:2000
Limitations	This LAT1 antibody is available for research use only.



Western blot testing of peripheral blood mononucleocyte lysate with LAT1 antibody at 0.01ug/ml. Predicted molecular weight ~28kDa, routinely observed at ~36kDa.

Description

Additional name(s) for this target protein: Linker for activation of T cells; LAT; pp36; 36 kDa phospho-tyrosine adaptor protein

Application Notes

Optimal dilution of the LAT1 antibody should be determined by the researcher.

1. This LAT1 antibody will detect isoforms a and b/c of the protein.

Immunogen

Amino acids GAPDYENLQELN were used as the immunogen for this LAT1 antibody.

Storage

Aliquot and store the LAT1 antibody at -20oC.