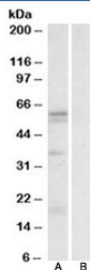


## LAT1 Antibody / L-type amino Acid Transporter 1 / SLC7A5 (R35630)

Catalog No.	Formulation	Size
R35630-100UG	0.5 mg/ml in 1X TBS, pH7.3, with 0.5% BSA (US sourced) and 0.02% sodium azide	100 ug

[Bulk quote request](#)

<b>Availability</b>	1-3 business days
<b>Species Reactivity</b>	Human
<b>Predicted Reactivity</b>	Dog
<b>Format</b>	Antigen affinity purified
<b>Host</b>	Goat
<b>Clonality</b>	Polyclonal (goat origin)
<b>Isotype</b>	Goat Ig
<b>Purity</b>	Antigen affinity
<b>Gene ID</b>	8140
<b>Applications</b>	Western Blot : 1-3ug/ml ELISA (peptide) LOD : 1:64000
<b>Limitations</b>	This LAT1 antibody is available for research use only.



Western blot testing of human spleen lysate with LAT1 antibody at 0.3ug/ml with [B] and without [A] blocking/immunizing peptide. Predicted molecular weight ~55kDa.

### Description

Additional name(s) for this target protein: L-type amino acid transporter 1, SLC7A5, solute carrier family 7 (cationic amino acid transporter,  $\gamma$ + system), member 5

### Application Notes

Optimal dilution of the LAT1 antibody should be determined by the researcher.

## **Immunogen**

Amino acids RHRKPELERPIKVN were used as the immunogen for this LAT1 antibody.

## **Storage**

Aliquot and store the LAT1 antibody at -20oC.