

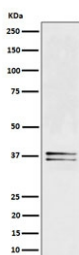
LAT Antibody / Linker for Activation of T cells [clone 28L72] (RQ8470)

Catalog No.	Formulation	Size
RQ8470	Antibody in PBS with 0.02% sodium azide, 50% glycerol and 0.4-0.5mg/ml BSA	100 ul

Recombinant RABBIT MONOCLONAL

[Bulk quote request](#)

Availability	1-3 days
Species Reactivity	Human
Format	Purified
Clonality	Recombinant Rabbit Monoclonal
Isotype	Rabbit IgG
Clone Name	28L72
Purity	Affinity chromatography
UniProt	O43561
Applications	Western Blot : 1:500-1:2000
Limitations	This LAT antibody is available for research use only.



Western blot testing of human Jurkat cell lysate with LAT antibody. Expected molecular weight: 36-38 kDa.

Description

Required for TCR (T-cell antigen receptor)- and pre-TCR-mediated signaling, both in mature T-cells and during their development. Involved in FCGR3 (low affinity immunoglobulin gamma Fc region receptor III)-mediated signaling in natural killer cells and FCER1 (high affinity immunoglobulin epsilon receptor)-mediated signaling in mast cells. Couples activation of these receptors and their associated kinases with distal intracellular events such as mobilization of intracellular calcium stores, PKC activation, MAPK activation or cytoskeletal reorganization through the recruitment of PLCG1, GRB2, GRAP2, and other signaling molecules. [UniProt]

Application Notes

Optimal dilution of the LAT antibody should be determined by the researcher.

Immunogen

A synthetic peptide from human LAT protein was used as the immunogen for the LAT antibody.

Storage

Store the LAT antibody at -20oC.