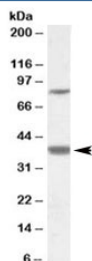


LASS1 Antibody (R34378)

Catalog No.	Formulation	Size
R34378-100UG	0.5 mg/ml in 1X TBS, pH7.3, with 0.5% BSA (US sourced) and 0.02% sodium azide	100 ug

[Bulk quote request](#)

Availability	1-3 business days
Species Reactivity	Human
Predicted Reactivity	Cow, Mouse, Pig
Format	Antigen affinity purified
Host	Goat
Clonality	Polyclonal (goat origin)
Isotype	Goat Ig
Purity	Antigen affinity
Gene ID	10715
Applications	Western Blot : 1-3ug/ml ELISA (peptide) LOD : 1:64000
Limitations	This LASS1 antibody is available for research use only.



Western blot testing of frontal cortex lysate with LASS1 antibody at 1ug/ml. The expected ~37kDa band and the additional ~85kDa band are both blocked by the immunizing peptide.

Description

Additional name(s) for this target protein: LAG1, CerS1 antibody, Ceramide synthase 1

Application Notes

Optimal dilution of the LASS1 antibody should be determined by the researcher.

Immunogen

Amino acids KDLREYDTAEAQ were used as the immunogen for this LASS1 antibody.

Storage

Aliquot and store the LASS1 antibody at -20oC.