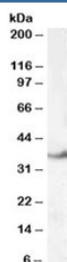


LASP1 Antibody (R34998)

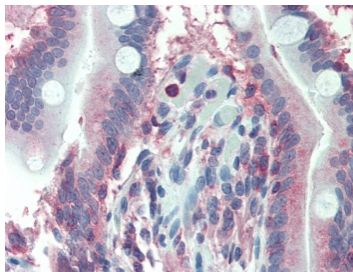
Catalog No.	Formulation	Size
R34998-100UG	0.5 mg/ml in 1X TBS, pH7.3, with 0.5% BSA (US sourced) and 0.02% sodium azide	100 ug

[Bulk quote request](#)

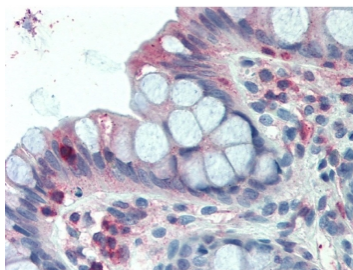
Availability	1-3 business days
Species Reactivity	Human
Predicted Reactivity	Dog
Format	Antigen affinity purified
Host	Goat
Clonality	Polyclonal (goat origin)
Isotype	Goat Ig
Purity	Antigen affinity
UniProt	Q14847
Gene ID	3927
Localization	Cytoplasmic
Applications	Western Blot : 0.1-0.3ug/ml IHC (FFPE) : 2.5-5ug/ml ELISA (peptide) LOD : 1:32000
Limitations	This LASP1 antibody is available for research use only.



Western blot testing of human kidney lysate with LASP1 antibody at 0.1ug/ml. Predicted molecular weight: 30/36/23kDa (isoforms 1/2/3).



IHC testing of FFPE human small intestine tissue with LASP1 antibody at 2.5ug/ml. Steamed antigen retrieval with citrate buffer pH 6, AP-staining.



IHC testing of FFPE human colon tissue with LASP1 antibody at 2.5ug/ml. Steamed antigen retrieval with citrate buffer pH 6, AP-staining.

Description

Additional name(s) for this target protein: LIM and SH3 protein 1

Application Notes

Optimal dilution of the LASP1 antibody should be determined by the researcher.

Immunogen

Amino acids PERRDSQDGSSYR were used as the immunogen for this LASP1 antibody. This sequence is common to isoforms 1/2/3 (Uniprot Q14847).

Storage

Aliquot and store the LASP1 antibody at -20oC.