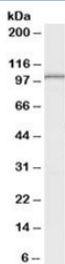


LARP2 Antibody (R35286)

Catalog No.	Formulation	Size
R35286-100UG	0.5 mg/ml in 1X TBS, pH7.3, with 0.5% BSA (US sourced) and 0.02% sodium azide	100 ug

[Bulk quote request](#)

Availability	1-3 business days
Species Reactivity	Human
Format	Antigen affinity purified
Host	Goat
Clonality	Polyclonal (goat origin)
Isotype	Goat Ig
Purity	Antigen affinity
Gene ID	55132
Applications	Western Blot : 0.1-0.3ug/ml ELISA (peptide) LOD : 1:128000
Limitations	This LARP2 antibody is available for research use only.



Western blot testing of human testis lysate with LARP2 antibody at 0.1ug/ml. Predicted molecular weight: ~105kDa.

Description

Additional name(s) for this target protein: La ribonucleoprotein domain family, member 2

Application Notes

Optimal dilution of the LARP2 antibody should be determined by the researcher.

1. This LARP2 antibody is specific for isoform 1.

Immunogen

Amino acids QGVLHIPPKKDLTDE were used as the immunogen for this LARP2 antibody.

Storage

Aliquot and store the LARP2 antibody at -20°C.