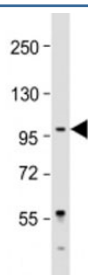


LARGE Antibody (F53896)

Catalog No.	Formulation	Size
F53896-0.05ML	In 1X PBS, pH 7.4, with 0.09% sodium azide	0.05 ml

[Bulk quote request](#)

Availability	1-3 business days
Species Reactivity	Human
Predicted Reactivity	Chicken, Mouse
Format	Antigen affinity purified
Host	Rabbit
Clonality	Polyclonal (rabbit origin)
Isotype	Rabbit Ig
Purity	Antigen affinity
UniProt	O95461
Applications	Western Blot : 1:1000-2000
Limitations	This LARGE antibody is available for research use only.



Western blot testing of Jurkat cell lysate with LARGE antibody at 1:2000. Predicted molecular weight: 88 kDa.

Description

Bifunctional glycosyltransferase with both xylosyltransferase and beta-1,3-glucuronyltransferase activities involved in the biosynthesis of the phosphorylated O-mannosyl trisaccharide (N-acetylgalactosamine-beta-3-N-acetylglucosamine-beta-4-(phosphate-6-)mannose), a carbohydrate structure present in alpha-dystroglycan (DAG1). Phosphorylated O-mannosyl trisaccharide is required for binding laminin G-like domain-containing extracellular proteins with high affinity and plays a key role in skeletal muscle function and regeneration. LARGE elongates the glucuronyl-beta-1,4-xylose-beta disaccharide primer structure initiated by B3GNT1/B4GAT1 by adding repeating units [-3-Xylose-alpha-1,3-GlcA-beta-1-] to produce a heteropolysaccharide.

Application Notes

Titration of the LARGE antibody may be required due to differences in protocols and secondary/substrate sensitivity.

Immunogen

A portion of amino acids 365-398 from the human protein was used as the immunogen for the LARGE antibody.

Storage

Aliquot the LARGE antibody and store frozen at -20oC or colder. Avoid repeated freeze-thaw cycles.