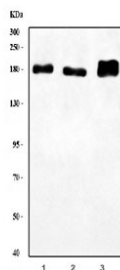


LARG Antibody / ARHGEF12 (RQ6941)

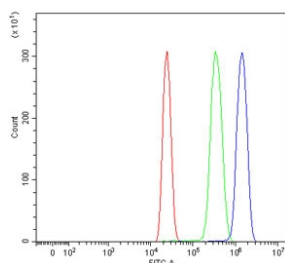
Catalog No.	Formulation	Size
RQ6941	0.5mg/ml if reconstituted with 0.2ml sterile DI water	100 ug

Bulk quote request

Availability	1-3 business days
Species Reactivity	Human, Rat
Format	Antigen affinity purified
Host	Rabbit
Clonality	Polyclonal (rabbit origin)
Isotype	Rabbit IgG
Purity	Antigen affinity purified
Buffer	Lyophilized from 1X PBS with 2% Trehalose
UniProt	Q9NZN5
Applications	Western Blot : 0.5-1 ug/ml Flow Cytometry : 1-3ug/ml Direct ELISA : 0.1-0.5ug/ml
Limitations	This LARG antibody is available for research use only.



Western blot testing of 1) human HEL, 2) human K562 and 3) rat brain lysate with LARG antibody. Predicted molecular weight ~173 kDa but commonly observed at up to 220 kDa, possibly due to phosphorylation.



Flow cytometry testing of human HL60 cells with LARG antibody at 1ug/million cells (blocked with goat sera); Red=cells alone, Green=isotype control, Blue= LARG antibody.

Description

Rho guanine nucleotide exchange factor 12 is a protein that in humans is encoded by the ARHGEF12 gene. Rho GTPases play a fundamental role in numerous cellular processes that are initiated by extracellular stimuli working through G protein-coupled receptors. The encoded protein may form a complex with G proteins and stimulate Rho-dependent signals. This protein has been observed to form a myeloid/lymphoid fusion partner in acute myeloid leukemia. Three transcript variants encoding different isoforms have been found for this gene.

Application Notes

Optimal dilution of the LARG antibody should be determined by the researcher.

Immunogen

Recombinant human protein (amino acids T4-S254) was used as the immunogen for the LARG antibody.

Storage

After reconstitution, the LARG antibody can be stored for up to one month at 4°C. For long-term, aliquot and store at -20°C. Avoid repeated freezing and thawing.