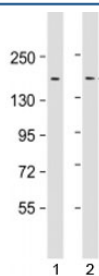


## LAP2 Antibody / Thymopoietin [clone 1617CT859.9.32] (F53801)

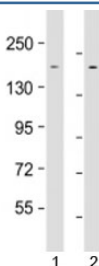
Catalog No.	Formulation	Size
F53801-0.2ML	In 1X PBS, pH 7.4, with 0.09% sodium azide	0.2 ml
F53801-0.05ML	In 1X PBS, pH 7.4, with 0.09% sodium azide	0.05 ml

[Bulk quote request](#)

<b>Availability</b>	1-3 business days
<b>Species Reactivity</b>	Human
<b>Format</b>	Purified
<b>Clonality</b>	Monoclonal (mouse origin)
<b>Isotype</b>	Mouse IgG1, kappa
<b>Clone Name</b>	1617CT859.9.32
<b>Purity</b>	Protein G affinity chromatography
<b>UniProt</b>	Q96RT1
<b>Applications</b>	Western Blot : 1:500-1:1000
<b>Limitations</b>	This LAP2 antibody is available for research use only.



Western blot testing of human 1) HeLa and 2) SW480 cell lysate with LAP2 antibody at 1:1000. Predicted molecular weight: 158 kDa.



Western blot testing of human 1) HeLa and 2) HepG2 cell lysate with LAP2 antibody at 1:1000. Predicted molecular weight: 158 kDa.

## Description

Lamina associated polypeptide 2/Thymopoietin acts as an adapter for the receptor ERBB2, in epithelia. By binding the unphosphorylated 'Tyr-1248' of receptor ERBB2, it may contribute to stabilize this unphosphorylated state.

## Application Notes

Titration of the LAP2 antibody may be required due to differences in protocols and substrate sensitivity.

## Immunogen

Human recombinant protein was used as the immunogen for this LAP2 antibody.

## Storage

Aliquot the LAP2 antibody and store frozen at -20oC or colder. Avoid repeated freeze-thaw cycles.