

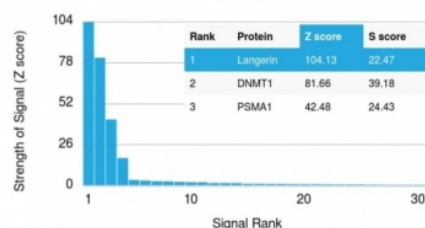
## Langerin Antibody / CD207 [clone LGRN/1821] (V7993)

Catalog No.	Formulation	Size
V7993-100UG	0.2 mg/ml in 1X PBS with 0.1 mg/ml BSA (US sourced) and 0.05% sodium azide	100 ug
V7993-20UG	0.2 mg/ml in 1X PBS with 0.1 mg/ml BSA (US sourced) and 0.05% sodium azide	20 ug
V7993SAF-100UG	1 mg/ml in 1X PBS; BSA free, sodium azide free	100 ug

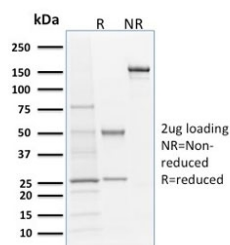
[Bulk quote request](#)

<b>Availability</b>	1-3 business days
<b>Species Reactivity</b>	Human
<b>Format</b>	Purified
<b>Clonality</b>	Monoclonal (mouse origin)
<b>Isotype</b>	Mouse IgG2a, kappa
<b>Clone Name</b>	LGRN/1821
<b>Purity</b>	Protein G affinity chromatography
<b>UniProt</b>	Q9UJ71
<b>Localization</b>	Cell surface, cytoplasmic
<b>Applications</b>	ELISA (order BSA-free Format For Coating) : Western Blot : 1-2ug/ml
<b>Limitations</b>	This Langerin antibody is available for research use only.

Human Protein Microarray Specificity Validation



Analysis of HuProt(TM) microarray containing more than 19,000 full-length human proteins using Langerin antibody (clone LGRN/1821). These results demonstrate the foremost specificity of the LGRN/1821 mAb. Z- and S- score: The Z-score represents the strength of a signal that an antibody (in combination with a fluorescently-tagged anti-IgG secondary Ab) produces when binding to a particular protein on the HuProt(TM) array. Z-scores are described in units of standard deviations (SD's) above the mean value of all signals generated on that array. If the targets on the HuProt(TM) are arranged in descending order of the Z-score, the S-score is the difference (also in units of SD's) between the Z-scores. The S-score therefore represents the relative target specificity of an Ab to its intended target.



SDS-PAGE analysis of purified, BSA-free Langerin antibody as confirmation of integrity and purity.

## Description

Langerhans cells (LCs) are a subset of immature dendritic cells (DCs) that specifically localize in the epidermis and other mucosal epithelia. Epidermal LCs possess strong immuno-stimulatory capacity and play a central role in the initiation and regulation of immune responses. Langerin (CD207) is a  $\text{Ca}^{2+}$ -dependent, C-type lectin domain containing, type II transmembrane protein that induces epidermal LCs to differentiate into Birbeck granules (BG). BGs are organelles with superimposing and zipper membranes that influence proper class I type antigen presentation to the circulating T cells. Human spleen, lymph node, thymus, liver, lung and heart express Langerin protein.

## Application Notes

Optimal dilution of the Langerin antibody should be determined by the researcher.

## Immunogen

A recombinant human partial protein (amino acids 74-213) was used as the immunogen for the Langerin antibody.

## Storage

Store the Langerin antibody at 2-8°C (with azide) or aliquot and store at -20°C or colder (without azide).