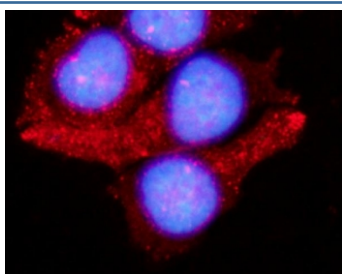


## LAMTOR1 Antibody (RQ6650)

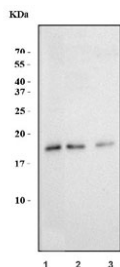
Catalog No.	Formulation	Size
RQ6650	0.5mg/ml if reconstituted with 0.2ml sterile DI water	100 ug

**Bulk quote request**

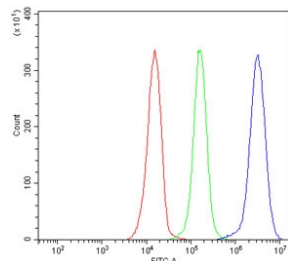
<b>Availability</b>	1-3 business days
<b>Species Reactivity</b>	Human, Rat, Monkey
<b>Format</b>	Antigen affinity purified
<b>Host</b>	Rabbit
<b>Clonality</b>	Polyclonal (rabbit origin)
<b>Isotype</b>	Rabbit IgG
<b>Purity</b>	Antigen affinity purified
<b>Buffer</b>	Lyophilized from 1X PBS with 2% Trehalose
<b>UniProt</b>	Q6IAA8
<b>Localization</b>	Cytoplasmic, cell membrane
<b>Applications</b>	Western Blot : 1-2ug/ml Immunofluorescence (FFPE) : 5ug/ml Flow Cytometry : 1-3ug/million cells Direct ELISA : 0.1-0.5ug/ml
<b>Limitations</b>	This LAMTOR1 antibody is available for research use only.



Immunofluorescent staining of FFPE human MCF7 cells with LAMTOR1 antibody (red) and DAPI nuclear stain (blue). HIER: steam section in pH6 citrate buffer for 20 min.



Western blot testing of 1) monkey COS-7, 2) human MCF7 and 3) rat lung tissue lysate with LAMTOR1 antibody. Predicted molecular weight ~18 kDa.



Flow cytometry testing of human JK-1 cells with LAMTOR1 antibody at 1ug/million cells (blocked with goat sera); Red=cells alone, Green=isotype control, Blue= LAMTOR1 antibody.

## Description

Late endosomal/lysosomal adaptor, MAPK and MTOR activator 1 is a protein that in humans is encoded by the LAMTOR1 gene. mTORC1 kinase complex is a critical component in the regulation of cell growth. Its activity is modulated by energy levels, growth factors, and amino acids. The four related GTPases, RagA, RagB, RagC, and RagD, have been shown to interact with raptor in mTORC1. These interactions are both necessary and sufficient for mTORC1 activation in response to amino acid signals. A protein complex consisting of LAMTOR1/C11orf59, LAMTOR2/ROBLD3, and LAMTOR3/MAPKSP1 has been identified to interact with and recruit the four Rag GTPases to the surface of lysosomes.

## Application Notes

Optimal dilution of the LAMTOR1 antibody should be determined by the researcher.

## Immunogen

Recombinant human protein (amino acids K31-P161) was used as the immunogen for the LAMTOR1 antibody.

## Storage

After reconstitution, the LAMTOR1 antibody can be stored for up to one month at 4oC. For long-term, aliquot and store at -20oC. Avoid repeated freezing and thawing.