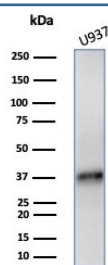


LAMP5 Antibody / Lysosome-Associated Membrane Glycoprotein 5 [clone LAMP5/7642] (V4821)

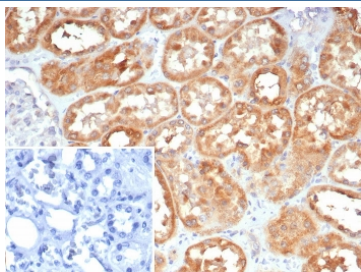
Catalog No.	Formulation	Size
V4821-100UG	0.2 mg/ml in 1X PBS with 0.1 mg/ml BSA (US sourced), 0.05% sodium azide	100 ug
V4821-20UG	0.2 mg/ml in 1X PBS with 0.1 mg/ml BSA (US sourced), 0.05% sodium azide	20 ug
V4821SAF-100UG	1 mg/ml in 1X PBS; BSA free, sodium azide free	100 ug

[Bulk quote request](#)

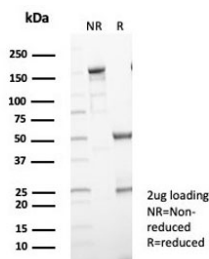
Availability	1-3 business days
Species Reactivity	Human
Format	Purified
Clonality	Monoclonal (mouse origin)
Isotype	Mouse IgG2, kappa
Clone Name	LAMP5/7642
Purity	Protein A/G affinity
UniProt	Q9UJQ1
Localization	Cell Surface, Lysosome
Applications	Western Blot : 1-2ug/ml Immunohistochemistry (FFPE) : 1-2ug/ml for 30 min at RT
Limitations	This LAMP5 antibody is available for research use only.



Western blot testing of human U937 cell lysate with LAMP5 antibody (clone LAMP5/7642). Predicted molecular weight ~31 kDa, but may be observed at higher molecular weights due to glycosylation.



IHC staining of FFPE human kidney tissue with LAMP5 antibody (clone LAMP5/7642). Inset: PBS used in place of primary Ab (secondary Ab negative control). HIER: boil tissue sections in pH 9 10mM Tris with 1mM EDTA for 20 min and allow to cool before testing.



SDS-PAGE analysis of purified, BSA-free LAMP5 antibody (clone LAMP5/7642) as confirmation of integrity and purity.

Description

Lysosome-associated membrane proteins (LAMP) are glycosylated type I membrane proteins that play a role in the biogenesis of the pigment melanin. LAMP-5, also known as C20orf103, is a 280 amino acid protein that belongs to the LAMP family and is mainly found in cytoplasmic vesicles of the neuronal cell body. LAMP-5 is up-regulated upon CpG activation and down-regulated up Toll-like receptor (TLR) ligands.

Application Notes

Optimal dilution of the LAMP5 antibody should be determined by the researcher.

Immunogen

Recombinant full-length human LAMP5 protein was used as the immunogen for the LAMP5 antibody.

Storage

Aliquot the LAMP5 antibody and store frozen at -20oC or colder. Avoid repeated freeze-thaw cycles.