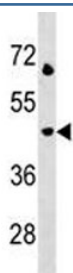


## LAMP3 Antibody / CD208 (F46369)

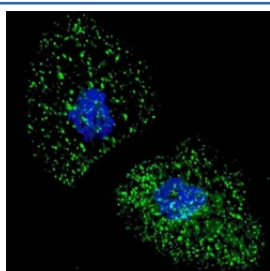
Catalog No.	Formulation	Size
F46369-0.4ML	In 1X PBS, pH 7.4, with 0.09% sodium azide	0.4 ml
F46369-0.08ML	In 1X PBS, pH 7.4, with 0.09% sodium azide	0.08 ml

[Bulk quote request](#)

<b>Availability</b>	1-3 business days
<b>Species Reactivity</b>	Human
<b>Format</b>	Antigen affinity purified
<b>Clonality</b>	Polyclonal (rabbit origin)
<b>Isotype</b>	Rabbit Ig
<b>Purity</b>	Antigen affinity
<b>UniProt</b>	Q9UQV4
<b>Applications</b>	Immunofluorescence : 1:100 Western Blot : 1:1000
<b>Limitations</b>	This LAMP3 antibody is available for research use only.



LAMP3 antibody western blot analysis in Jurkat lysate. Predicted molecular weight: ~44 kDa.



Fluorescent image of U251 cells stained with LAMP3 antibody at 1:100. LAMP3 immunoreactivity is localized to autophagic vacuoles in the cytoplasm.

## Description

LAMP3 / CD208 is a member of a family of membrane glycoproteins. It may change lysosome function after the transfer of peptide-MHC class II molecules to the surface of dendritic cells.

## Application Notes

Titration of the LAMP3 antibody may be required due to differences in protocols and secondary/substrate sensitivity.

## Immunogen

A portion of amino acids 8-38 from the human protein was used as the immunogen for this LAMP3 antibody.

## Storage

Aliquot the LAMP3 antibody and store frozen at -20oC or colder. Avoid repeated freeze-thaw cycles.