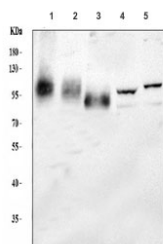


LAMP1 Antibody / CD107A (R30920)

Catalog No.	Formulation	Size
R30920	0.5mg/ml if reconstituted with 0.2ml sterile DI water	100 ug

[Bulk quote request](#)

Availability	1-3 business days
Species Reactivity	Human, Mouse
Format	Antigen affinity purified
Host	Rabbit
Clonality	Polyclonal (rabbit origin)
Isotype	Rabbit IgG
Purity	Antigen affinity
Buffer	Lyophilized from 1X PBS with 2% Trehalose
UniProt	P11279
Applications	Western Blot : 0.5-1ug/ml
Limitations	This LAMP1 antibody is available for research use only.



LAMP1 Antibody WB. Western blot testing of 1) human HepG2, 2) human Jurkat, 3) human HeLa, 4) mouse brain and 5) mouse lung tissue lysate with LAMP1 antibody. This heavily glycosylated protein of 417 amino acids can be visualized at up to 140 kDa.

Description

LAMP1 Antibody detects Lysosomal-associated membrane protein 1, also called LAMPA, LGP120 or CD107A, a member of a family of membrane glycoproteins. This glycoprotein provides selectins with carbohydrate ligands. It may also play a role in tumor cell metastasis. It has also been shown to be a marker of degranulation on lymphocytes such as CD8+ and NK cells. By means of in situ hybridization, Mattei et al.(1990) assigned the gene to chromosome 13q34. Hybridization of LAMP1 cDNA to chromosome 12p13.3 was observed even when probes representing different portions of the LAMP1cDNA were used.

This LAMP1 / CD107A antibody is part of a [broader CD antibody panel](#) offered by NSJ Bioreagents.

Application Notes

The stated application concentrations are suggested starting points. Titration of the LAMP1 antibody may be required due to differences in protocols and secondary/substrate sensitivity.

Immunogen

Amino acids 403-417 (YLVGRKRSHAGYQTI) were used as the immunogen for this LAMP1 antibody.

Storage

After reconstitution, the LAMP1 antibody can be stored for up to one month at 4°C. For long-term, aliquot and store at -20°C. Avoid repeated freezing and thawing.