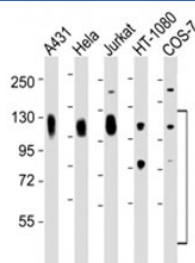


## LAMP Antibody / CD107A [clone 1483CT517.45.23] (F53195)

Catalog No.	Formulation	Size
F53195-0.4ML	In 1X PBS, pH 7.4, with 0.09% sodium azide	0.4 ml
F53195-0.08ML	In 1X PBS, pH 7.4, with 0.09% sodium azide	0.08 ml

[Bulk quote request](#)

<b>Availability</b>	1-3 business days
<b>Species Reactivity</b>	Human, African Green Monkey
<b>Format</b>	Purified
<b>Host</b>	Mouse
<b>Clonality</b>	Monoclonal (mouse origin)
<b>Isotype</b>	Mouse IgG1, k
<b>Clone Name</b>	1483CT517.45.23
<b>Purity</b>	Purified
<b>UniProt</b>	P11279
<b>Applications</b>	Western Blot : 1:2000
<b>Limitations</b>	This LAMP antibody is available for research use only.



Western blot testing of LAMP antibody at 1:2000 dilution. Lane 1: A431; 2: HeLa; 3: Jurkat; 4: HT-1080; 5: COS-7 lysate. This heavily glycosylated protein of 417 amino acids is visualized at up to 140KD.

## Description

Presents carbohydrate ligands to selectins. Also implicated in tumor cell metastasis.

## Application Notes

Titration of the LAMP antibody may be required due to differences in protocols and secondary/substrate sensitivity.

## **Immunogen**

This LAMP antibody was produced from a mouse immunized with a recombinant protein.

## **Storage**

Aliquot the LAMP antibody and store frozen at -20oC or colder. Avoid repeated freeze-thaw cycles.