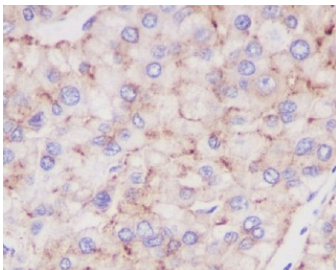


LAMP-2A Antibody [clone DIE-12] (RQ5402)

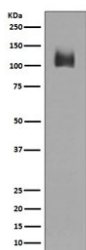
Catalog No.	Formulation	Size
RQ5402	Antibody in PBS with 0.02% sodium azide, 50% glycerol and 0.4-0.5mg/ml BSA	100 ul

[Bulk quote request](#)

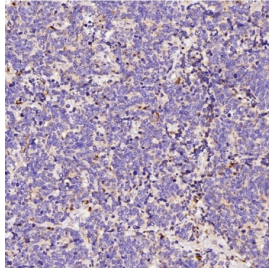
Availability	1-2 weeks
Species Reactivity	Human, Mouse, Rat
Format	Purified
Host	Rabbit
Clonality	Rabbit Monoclonal
Isotype	Rabbit IgG
Clone Name	DIE-12
Purity	Affinity purified
UniProt	P13473
Applications	Western Blot : 1:500-1:2000 Immunohistochemistry (FFPE) : 1:50-1:600
Limitations	This LAMP-2A antibody is available for research use only.



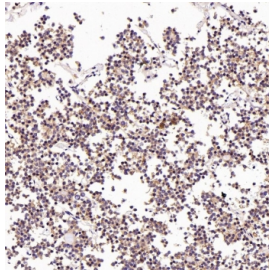
IHC staining of FFPE human liver cancer with LAMP-2A antibody. HIER: boil tissue sections in pH6, 10mM citrate buffer, for 10-20 min and allow to cool before testing.



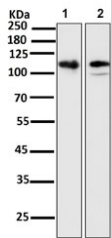
Western blot testing of human JAR cell lysate with LAMP-2A antibody. This protein can be extensively glycosylated and has a visualized molecular weight from 45~110 kDa.



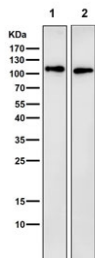
IHC staining of FFPE human small cell lung cancer tissue with LAMP-2A antibody. HIER: boil tissue sections in pH6, 10mM citrate buffer, for 10-20 min and allow to cool before testing.



IHC staining of FFPE human pituitary tumor tissue with LAMP-2A antibody. HIER: boil tissue sections in pH6, 10mM citrate buffer, for 10-20 min and allow to cool before testing.



Western blot testing of 1) human HeLa and 2) rat spleen tissue lysate with LAMP-2A antibody. This protein can be extensively glycosylated and has a visualized molecular weight from 45~110 kDa.



Western blot testing of 1) mouse liver and 2) rat liver tissue lysate with LAMP-2A antibody. This protein can be extensively glycosylated and has a visualized molecular weight from 45~110 kDa.

Description

The protein encoded by the LAMP2 gene is a member of a family of membrane glycoproteins. This glycoprotein provides selectins with carbohydrate ligands. It may play a role in tumor cell metastasis. It may also function in the protection, maintenance, and adhesion of the lysosome. Alternative splicing of this gene results in multiple transcript variants encoding distinct proteins. [RefSeq]

Application Notes

Optimal dilution of the LAMP-2A antibody should be determined by the researcher.

Immunogen

A synthetic peptide specific to the LAMP-2A isoform of human LAMP2 was used as the immunogen for the LAMP-2A antibody.

Storage

Store the LAMP-2A antibody at -20°C.

