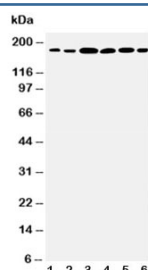


Laminin gamma 1 Antibody / LAMC1 / LAMB2 (R30658)

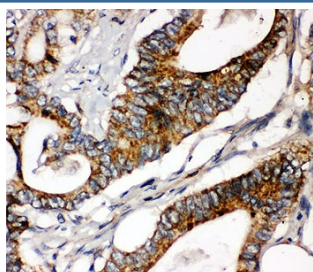
Catalog No.	Formulation	Size
R30658	0.5mg/ml if reconstituted with 0.2ml sterile DI water	100 ug

Bulk quote request

Availability	1-3 business days
Species Reactivity	Human, Mouse, Rat
Format	Antigen affinity purified
Host	Rabbit
Clonality	Polyclonal (rabbit origin)
Isotype	Rabbit IgG
Purity	Antigen affinity
Buffer	Lyophilized from 1X PBS with 2.5% BSA and 0.025% sodium azide/thimerosal
UniProt	P11047
Localization	Membrane, secreted
Applications	Western Blot : 0.5-1ug/ml IHC (FFPE) : 0.5-1ug/ml
Limitations	This Laminin gamma 1 antibody is available for research use only.



Western blot testing of Laminin gamma 1 antibody and Lane 1: rat kidney; 2: rat lung; 3: U87; 4: SMMC-7721; 5: HeLa; 6: SKOV3 cell lysate. Expected molecular weight: 174-200 kDa.



IHC-P: Laminin gamma 1 antibody testing of human intestinal cancer tissue

Description

Laminin subunit gamma-1 is a protein that in humans is encoded by the LAMC1 gene. Laminins, a family of extracellular matrix glycoproteins, are the major noncollagenous constituent of basement membranes. They have been implicated in a wide variety of biological processes including cell adhesion, differentiation, migration, signaling, neurite outgrowth and metastasis. Laminins are composed of 3 non identical chains: laminin alpha, beta and gamma (formerly A, B1, and B2, respectively) and they form a cruciform structure consisting of 3 short arms, each formed by a different chain, and a long arm composed of all 3 chains. Each laminin chain is a multidomain protein encoded by a distinct gene. Several isoforms of each chain have been described. Different alpha, beta and gamma chain isomers combine to give rise to different heterotrimeric laminin isoforms which are designated by Arabic numerals in the order of their discovery. The biological functions of the different chains and trimer molecules are largely unknown, but some have been shown to differ with respect to their tissue distribution, presumably reflecting diverse functions in vivo. This gene encodes the gamma chain isoform. The gamma 1 chain, formerly though to be a beta chain, contains structural domains similar to beta chains, however, lacks the short alpha region separating domains I and II. The structural organization of this gene also suggested that it had diverged considerably from the beta chain genes.

Application Notes

The stated application concentrations are suggested starting points. Titration of the Laminin gamma 1 antibody may be required due to differences in protocols and secondary/substrate sensitivity.

Immunogen

Amino acids 1566-1579 (KKQEAAIMDYNRDI-human) were used as the immunogen for this Laminin gamma 1 antibody.

Storage

After reconstitution, the Laminin gamma 1 antibody can be stored for up to one month at 4°C. For long-term, aliquot and store at -20°C. Avoid repeated freezing and thawing.