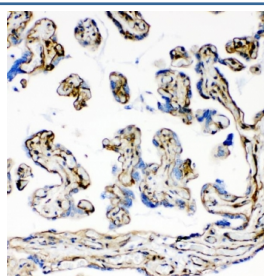


## Laminin Antibody [clone LAM-89] (R30047)

Catalog No.	Formulation	Size
R30047	0.5mg/ml if reconstituted with 0.2ml sterile DI water	100 ug

**Bulk quote request**

<b>Availability</b>	1-3 business days
<b>Species Reactivity</b>	Human
<b>Format</b>	Ascites
<b>Host</b>	Mouse
<b>Clonality</b>	Monoclonal (mouse origin)
<b>Isotype</b>	Mouse IgG1
<b>Clone Name</b>	LAM-89
<b>Purity</b>	Unpurified ascites
<b>Gene ID</b>	284217
<b>Applications</b>	Immunohistochemistry (FFPE) : 2-5ug/ml
<b>Limitations</b>	This Laminin antibody is available for research use only.



IHC staining of FFPE human placental tissue with Laminin antibody. HIER: boil tissue sections in pH8 EDTA for 20 min and allow to cool before testing.

## Description

Laminin is a heterotrimeric extracellular matrix protein consisting of 3 chains: alpha-1, beta-1 and gamma-1, formerly called beta-2(LAMA2). This gene is over 260,000 base pairs and contains 64 exons. Laminin is similar with merosin, a basement membrane-associated protein found in placenta, striated muscle, and peripheral nerve, and both of them are members of the same family of basement membrane proteins. And merosin is the same as laminin-M, a striated muscle-specific, basal-lamina-associated protein, it may play a primary role in the pathogenesis of that disorder.

## Application Notes

The stated application concentrations are suggested starting points. Titration of the Laminin antibody may be required due to differences in protocols and secondary/substrate sensitivity.

## Immunogen

Human laminin was used as the immunogen for this Laminin antibody.

## Storage

After reconstitution, the Laminin antibody can be stored for up to one month at 4°C. For long-term, aliquot and store at -20°C. Avoid repeated freezing and thawing.