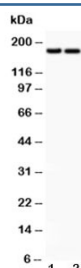


Laminin Antibody (Gamma 1-3) (R31563)

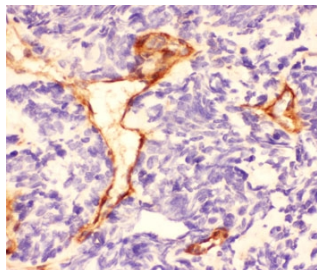
Catalog No.	Formulation	Size
R31563	0.5mg/ml if reconstituted with 0.2ml sterile DI water	100 ug

Bulk quote request

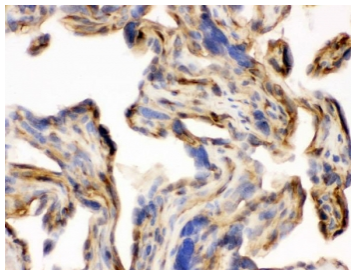
Availability	1-3 business days
Species Reactivity	Human
Format	Antigen affinity purified
Clonality	Polyclonal (rabbit origin)
Isotype	Rabbit IgG
Purity	Antigen affinity
Buffer	Lyophilized from 1X PBS with 2.5% BSA and 0.025% sodium azide
UniProt	P02468, Q61092, Q9R0B6
Gene ID	3915, 3918, 10319
Localization	Membrane, secreted (cytoplasmic in some tissue)
Applications	Western Blot : 0.5-1ug/ml Immunohistochemistry (FFPE) : 1-2ug/ml Immunohistochemistry (Frozen) : 1-2ug/ml
Limitations	This Laminin antibody is available for research use only.



Western blot testing of Laminin antibody and Lane 1: HeLa; 2: HEPG2 lysate. Expected molecular weight: 172-200 kDa (G1 & G3), 130-140 kDa (G2).



IHC staining of FFPE human lung cancer with Laminin antibody. HIER: boil tissue sections in pH6, 10mM citrate buffer, for 20 min and allow to cool before testing.



IHC staining of frozen human placenta with Laminin antibody. HIER: boil tissue sections in pH6, 10mM citrate buffer, for 20 min and allow to cool before testing.

Description

Laminins are major proteins in the basal lamina (one of the layers of the basement membrane), a protein network foundation for most cells and organs. Laminins form independent networks and are associated with type IV collagen networks via entactin, fibronectin, and perlecan. They are important and biologically active parts of the basal lamina, influencing cell differentiation, migration, and adhesion, as well as phenotype and survival. Laminins are trimeric proteins that contain an alpha-chain, a beta-chain, and a gamma-chain, found in five, four, and three genetic variants, respectively. Laminins critically contribute to cell attachment and differentiation, cell shape and movement, maintenance of tissue phenotype, and promotion of tissue survival.

Application Notes

The stated application concentrations are suggested starting points. Titration of the Laminin antibody may be required due to differences in protocols and secondary/substrate sensitivity.

Immunogen

A peptide mixture of Laminin gamma 1, 2 & 3 (DLNKLNEIEGTLNKAKDEMK + MSELERARQQRGHLHLLLET + LQRKLSLLEQESQQQELQIQ) was used as the immunogen for this Laminin antibody.

Storage

After reconstitution, the Laminin antibody can be stored for up to one month at 4oC. For long-term, aliquot and store at -20oC. Avoid repeated freezing and thawing.