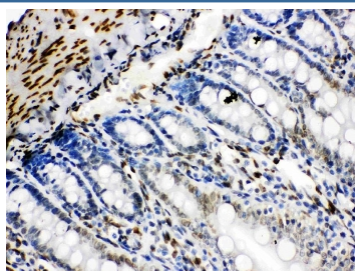


Lamin B2 Antibody (R30719)

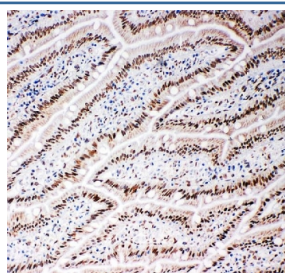
Catalog No.	Formulation	Size
R30719	0.5mg/ml if reconstituted with 0.2ml sterile DI water	100 ug

Bulk quote request

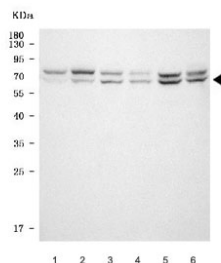
Availability	1-3 business days
Species Reactivity	Human, Mouse, Rat
Format	Antigen affinity purified
Clonality	Polyclonal (rabbit origin)
Isotype	Rabbit IgG
Purity	Antigen affinity
Buffer	Lyophilized from 1X PBS with 2.5% BSA, 0.025% thimerosal and 0.05% sodium azide
UniProt	Q03252
Applications	Western Blot : 0.5-1ug/ml IHC (FFPE) : 0.5-1ug/ml IHC (Frozen) : 0.5-1ug/ml
Limitations	This Lamin B2 antibody is available for research use only.



IHC staining of FFPE rat intestinal tissue with Lamin B2 antibody. HIER: boil tissue sections in pH8 EDTA for 20 min and allow to cool before testing.



IHC staining of frozen rat intestinal tissue with Lamin B2 antibody.



Western blot testing of 1) human HeLa (whole cell), 2) human HeLa (nuclear fraction), 3) human K562 (nuclear fraction), 4) human PC-3, 5) rat C6 and 6) mouse NIH 3T3 cell lysate with Lamin B2 antibody. Predicted molecular weight ~68-70 kDa.

Description

Lamin B2, also called LMNB2, is a protein associated with laminopathies. The LMNB2 gene is mapped to the G-negative subtelomeric band p13.3 of chromosome 19 by in situ hybridization. Model organisms have been used in the study of Lamin B2 function. A conditional knockout mouse line, called *Lmnb2*, was generated as part of the International Knockout Mouse Consortium program—a high-throughput mutagenesis project to generate and distribute animal models of disease to interested scientists. A highly sensitive procedure about mapping the start site of DNA replication in a 13.7-kb region of human chromosome 19 coding for lamin B2 is developed for the identification of the origin of bidirectional DNA synthesis in single-copy replicons of mammalian cells.

Application Notes

Titration of the Lamin B2 antibody may be required due to differences in protocols and secondary/substrate sensitivity.

Immunogen

Amino acids 580-597 (EEDLFHQGGDPRTTSRGC) were used as the immunogen for this Lamin B2 antibody (100% homologous in human, mouse and rat).

Storage

The lyophilized Lamin B2 antibody can be stored at 4°C. After reconstitution, aliquot and store at -20°C. Avoid repeated freezing and thawing.