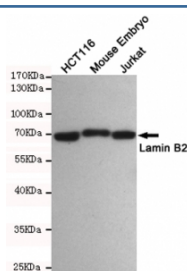


Lamin B2 Antibody [clone 8F6-E8-F12] (F54048)

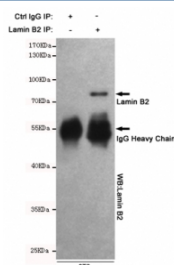
| Catalog No. | Formulation | Size |
|--------------|--|--------|
| F54048-0.1ML | Ascites with 50% glycerol and 0.02% sodium azide | 0.1 ml |

Bulk quote request

| | |
|---------------------------|--|
| Availability | 1-3 business days |
| Species Reactivity | Human, Mouse |
| Format | Ascites |
| Clonality | Monoclonal (mouse origin) |
| Isotype | Mouse IgG1 |
| Clone Name | 8F6-E8-F12 |
| UniProt | Q03252 |
| Applications | Western Blot : 1:500 Immunoprecipitation : suitable |
| Limitations | This Lamin B2 antibody is available for research use only. |



Western blot testing of 1) human HCT116, 2) mouse embryo and 3) human Jurkat cell lysates using Lamin B2 antibody at 1:500. Predicted molecular weight ~70 kDa.



Immunoprecipitation of Lamin B1 from mouse NIH3T3 cell lysate, and subsequent western blot testing, using Lamin B1 antibody.

Description

Lamins are components of the nuclear lamina, a fibrous layer on the nucleoplasmic side of the inner nuclear membrane,

which is thought to provide a framework for the nuclear envelope and may also interact with chromatin.

Application Notes

The stated application concentrations are suggested starting points. Titration of the Lamin B2 antibody may be required due to differences in protocols and secondary/substrate sensitivity.

Immunogen

A human recombinant protein was used as the immunogen for this Lamin B2 antibody.

Storage

Store the Lamin B2 antibody at -20oC.