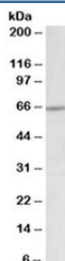


Lamin B1 Antibody (R34418)

Catalog No.	Formulation	Size
R34418-100UG	0.5 mg/ml in 1X TBS, pH7.3, with 0.5% BSA (US sourced) and 0.02% sodium azide	100 ug

[Bulk quote request](#)

Availability	1-3 business days
Species Reactivity	Human
Predicted Reactivity	Cow, Pig
Format	Antigen affinity purified
Host	Goat
Clonality	Polyclonal (goat origin)
Isotype	Goat Ig
Purity	Antigen affinity
Gene ID	4001
Applications	Western Blot : 0.1-0.3ug/ml ELISA (peptide) LOD : 1:128000
Limitations	This Lamin B1 antibody is available for research use only.



Western blot testing of Jurkat lysate with Lamin B1 antibody at 0.2ug/ml. Predicted molecular weight ~66kDa.

Description

Additional name(s) for this target protein: LMN; LMNB1

Application Notes

Optimal dilution of the Lamin B1 antibody should be determined by the researcher.

1. This Lamin B1 antibody is specific for isoform 1.

Immunogen

Amino acids KESDLNGAQIKLRE were used as the immunogen for this Lamin B1 antibody.

Storage

Aliquot and store the Lamin B1 antibody at -20oC.