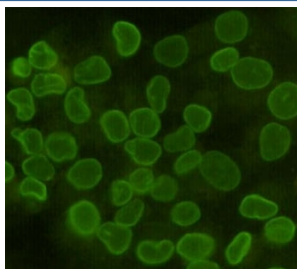


## Lamin B1 Antibody [clone 5G8-D3-H7] (F54037)

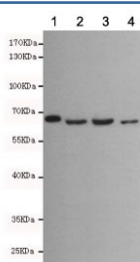
Catalog No.	Formulation	Size
F54037-0.1ML	In PBS with 50% glycerol and 0.03% ProClin 300	0.1 ml

**Bulk quote request**

<b>Availability</b>	1-3 business days
<b>Species Reactivity</b>	Human, Mouse, Primate
<b>Format</b>	Purified
<b>Host</b>	Mouse
<b>Clonality</b>	Monoclonal (mouse origin)
<b>Isotype</b>	Mouse IgG2b
<b>Clone Name</b>	5G8-D3-H7
<b>Purity</b>	Protein G affinity
<b>UniProt</b>	P20700
<b>Applications</b>	Western Blot : 1:500 Immunocytochemistry/Immunofluorescence : 1:100
<b>Limitations</b>	This Lamin B1 antibody is available for research use only.



ICC/IF staining of HeLa cells, fixed with 4% Paraformaldehyde, using Lamin B1 antibody at 1:100.



Western blot testing of 1) monkey COS7, 2) human Molt-4, 3) human A549 and 4) mouse NIH3T3 cell lysates with Lamin B1 antibody at 1:500. Predicted molecular weight ~66 kDa.

## Description

Lamins are components of the nuclear lamina, a fibrous layer on the nucleoplasmic side of the inner nuclear membrane, which is thought to provide a framework for the nuclear envelope and may also interact with chromatin.

## Application Notes

The stated application concentrations are suggested starting points. Titration of the Lamin B1 antibody may be required due to differences in protocols and secondary/substrate sensitivity.

## Immunogen

A human recombinant protein was used as the immunogen for this Lamin B1 antibody.

## Storage

Store the Lamin B1 antibody at -20oC.