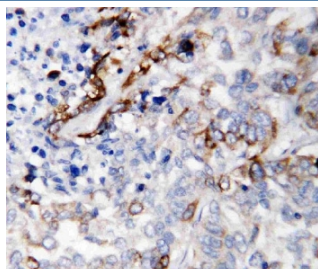


## LAMC2 Antibody / Laminin gamma 2 (R30659)

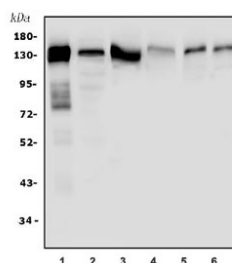
Catalog No.	Formulation	Size
R30659	0.5mg/ml if reconstituted with 0.2ml sterile DI water	100 ug

**Bulk quote request**

<b>Availability</b>	1-3 business days
<b>Species Reactivity</b>	Human, Mouse, Rat
<b>Format</b>	Antigen affinity purified
<b>Host</b>	Rabbit
<b>Clonality</b>	Polyclonal (rabbit origin)
<b>Isotype</b>	Rabbit IgG
<b>Purity</b>	Antigen affinity
<b>Buffer</b>	Lyophilized from 1X PBS with 2.5% BSA and 0.025% sodium azide/thimerosal
<b>UniProt</b>	Q13753
<b>Localization</b>	Membrane, secreted
<b>Applications</b>	Western Blot : 0.5-1ug/ml Immunohistochemistry (FFPE) : 1-2ug/ml
<b>Limitations</b>	This LAMC2 antibody is available for research use only.



IHC staining of FFPE human lung cancer tissue with LAMC2 antibody. HIER: boil tissue sections in pH8 EDTA for 20 min and allow to cool before testing.



Western blot testing of 1) human A431, 2) human Caco-2, 3) human PC-3, 4) human A549, 5) rat lung and 6) mouse lung tissue lysate. Expected molecular weight: 130-140 kDa.

## Description

Laminin subunit gamma-2 is a protein that in humans is encoded by the LAMC2 gene. Laminins, a family of extracellular matrix glycoproteins, are the major noncollagenous constituent of basement membranes. They have been implicated in a wide variety of biological processes including cell adhesion, differentiation, migration, signaling, neurite outgrowth and metastasis. This gene encodes the gamma chain isoform laminin, gamma2. The gamma2 chain, formerly thought to be a truncated version of beta chain(B2t), is highly homologous to the gamma1 chain; however, it lacks domain VI, and domains V, IV and III are shorter. It is expressed in several fetal tissues but differently from gamma1, and is specifically localized to epithelial cells in skin, lung and kidney. The epithelium-specific expression of the gamma 2 chain implied its role as an epithelium attachment molecule, and mutations in this gene have been associated with junctional epidermolysis bullosa, a skin disease characterized.

## Application Notes

The stated application concentrations are suggested starting amounts. Titration of the LAMC2 antibody may be required due to differences in protocols and secondary/substrate sensitivity.

## Immunogen

An amino acid sequence from the C-terminus of LAMC2 (ETSIDGILADVKNLENIRDNL) was used as the immunogen for this LAMC2 antibody (100% homologous in human, mouse and rat).

## Storage

After reconstitution, the LAMC2 antibody can be stored for up to one month at 4oC. For long-term, aliquot and store at -20oC. Avoid repeated freezing and thawing.