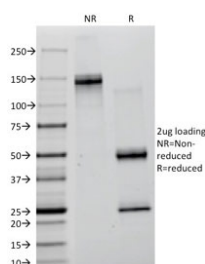


Lambda Light Chain Antibody [clone ICO-106] (V2151)

Catalog No.	Formulation	Size
V2151-100UG	0.2 mg/ml in 1X PBS with 0.1 mg/ml BSA (US sourced) and 0.05% sodium azide	100 ug
V2151-20UG	0.2 mg/ml in 1X PBS with 0.1 mg/ml BSA (US sourced) and 0.05% sodium azide	20 ug
V2151SAF-100UG	1 mg/ml in 1X PBS; BSA free, sodium azide free	100 ug

[Bulk quote request](#)

Availability	Discontinued
Species Reactivity	Human
Format	Purified
Host	Mouse
Clonality	Monoclonal (mouse origin)
Isotype	Mouse IgG1, kappa
Clone Name	ICO-106
Purity	Protein G affinity chromatography
Buffer	1X PBS, pH 7.4
Gene ID	3535
Localization	Cell surface, cytoplasmic and secreted
Applications	ELISA : 1-5ug/ml for coating (order BSA/sodium azide-free format)
Limitations	This Lambda Light Chain antibody is available for research use only.



SDS-PAGE analysis of purified, BSA-free Lambda Light Chain antibody (clone ICO-106) as confirmation of integrity and purity.

Description

This antibody is specific to lambda light chain of immunoglobulin and shows no cross-reaction with kappa light chain or any of the five heavy chains. In mammals, the two light chains in an antibody are always identical, with only one type of light chain, kappa or lambda. In general the ratio of Kappa to Lambda is 3:1. However, with the occurrence of multiple myeloma or other B-cell malignancies this ratio is disturbed. Antibody to the lambda light chain is reportedly useful in the identification of leukemias, plasmacytomas, and certain non-Hodgkin's lymphomas. Demonstration of clonality in lymphoid infiltrates indicates that the infiltrate is malignant.

Application Notes

The concentration stated for each application is a general starting point. Variations in protocols, secondaries and substrates may require the Lambda Light Chain antibody to be titrated up or down for optimal performance.

Immunogen

Purified human Ig was used as the immunogen for this Lambda Light Chain antibody.

Storage

Store the Lambda Light Chain antibody at 2-8°C (with azide) or aliquot and store at -20°C or colder (without azide).

Alternate Names

Bence Jones Protein; BJP; IGLC 1/2/3; Mcg Marker; Paraprotein, Lambda antibody, Lambda light chain antibody

References (2)