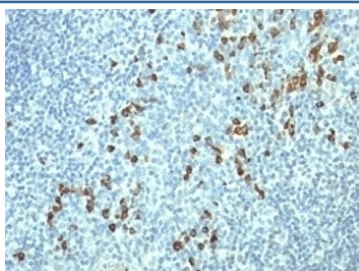


Lambda Light Chain Antibody [clone HP6054] (V3151)

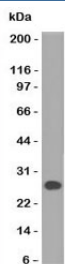
Catalog No.	Formulation	Size
V3151-100UG	0.2 mg/ml in 1X PBS with 0.1 mg/ml BSA (US sourced) and 0.05% sodium azide	100 ug
V3151-20UG	0.2 mg/ml in 1X PBS with 0.1 mg/ml BSA (US sourced) and 0.05% sodium azide	20 ug
V3151SAF-100UG	1 mg/ml in 1X PBS; BSA free, sodium azide free	100 ug
V3151IHC-7ML	Prediluted in 1X PBS with 0.1 mg/ml BSA (US sourced) and 0.05% sodium azide; *For IHC use only*	7 ml

[Bulk quote request](#)

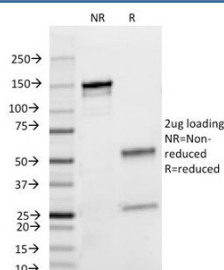
Availability	1-3 business days
Species Reactivity	Human
Format	Purified
Clonality	Monoclonal (mouse origin)
Isotype	Mouse IgG2a, kappa
Clone Name	HP6054
Purity	Protein G affinity chromatography
UniProt	P01701, P01842
Localization	Cell Surface, cytoplasmic and secreted
Applications	Flow Cytometry : 1-2ug/10 ⁶ cells Immunofluorescence : 1-2ug/ml Western Blot : 1-2ug/ml Immunohistochemistry (FFPE) : 1-2ug/ml for 30 min at RT
Limitations	This Lambda Light Chain antibody is available for research use only.



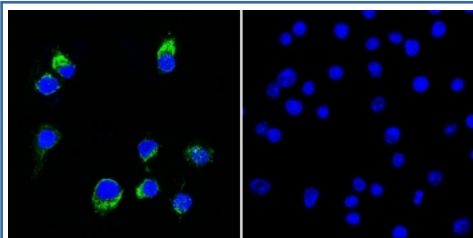
IHC: Formalin-fixed, paraffin-embedded human tonsil stained with Lambda Light Chain antibody (HP6054).



Western blot of human Intestinal lysate using Lambda Light Chain antibody (HP6054).



SDS-PAGE Analysis of Purified, BSA-Free Lambda Light Chain Antibody (clone HP6054). Confirmation of Integrity and Purity of the Antibody.



(Left) Immunofluorescent staining of permeabilized human Ramos cells with CF488-labeled Lambda Light Chain antibody (clone HP6054, green) and DAPI (blue). (Right) Negative control.

Description

This mAb is specific to lambda light chain of immunoglobulin and shows no cross-reaction with kappa light chain or any of the five heavy chains. In mammals, the two light chains in an antibody are always identical, with only one type of light chain, kappa or lambda. The ratio of Kappa to Lambda is 70:30. However, with the occurrence of multiple myeloma or other B-cell malignancies this ratio is disturbed. Antibody to the lambda light chain is reportedly useful in the identification of leukemias, plasmacytomas, and certain non-Hodgkin's lymphomas. Demonstration of clonality in lymphoid infiltrates indicates that the infiltrate is malignant.

Application Notes

The optimal dilution of the Lambda Light Chain antibody for each application should be determined by the researcher.

1. Staining of formalin-fixed tissues requires boiling tissue sections in 10mM Citrate Buffer, pH 6.0, for 10-20 min followed by cooling at RT for 20 minutes.
2. The prediluted format is supplied in a dropper bottle and is optimized for use in IHC. After epitope retrieval step (if required), drip mAb solution onto the tissue section and incubate at RT for 30 min.

Immunogen

Purified human IgG myeloma proteins were used as the immunogen for this Lambda Light Chain antibody.

Storage

Store the Lambda Light Chain antibody at 2-8°C (with azide) or aliquot and store at -20°C or colder (without azide).

