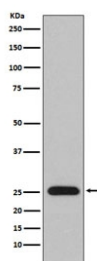


## Lambda light chain Antibody [clone ADOC-9] (RQ4975)

Catalog No.	Formulation	Size
RQ4975	Antibody in PBS with 0.02% sodium azide, 50% glycerol and 0.4-0.5mg/ml BSA	100 ul

[Bulk quote request](#)

Availability	1-2 weeks
Species Reactivity	Human
Format	Purified
Host	Rabbit
Clonality	Rabbit Monoclonal
Isotype	Rabbit IgG
Clone Name	ADOC-9
Purity	Affinity purified
UniProt	P01701
Applications	Western Blot : 1:1000-1:5000
Limitations	This Lambda light chain antibody is available for research use only.



Western blot testing of human plasma lysate with Lambda light chain antibody. Predicted molecular weight: 22-25 kDa.

## Description

All five immunoglobulin classes share the same basic four polypeptide chain structure of two heavy-chains and two light chains. There are five heavy chain types, and two light-chain types (Kappa and Lambda) both having a molecular weight of 22.5kDa. Any heavy-chain type can associate with either light-chain type, but on any immunoglobulin molecule both light-chains are of the same type.

## Application Notes

Optimal dilution of the Lambda light chain antibody should be determined by the researcher.

## Immunogen

A synthetic peptide specific to human Lambda light chain was used as the immunogen for the Lambda light chain antibody.

## Storage

Store the Lambda light chain antibody at -20oC.