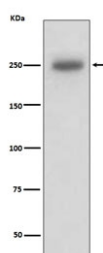


LAMB1 Antibody / Laminin beta 1 [clone AODF-12] (RQ5195)

Catalog No.	Formulation	Size
RQ5195	Antibody in PBS with 0.02% sodium azide, 50% glycerol and 0.4-0.5mg/ml BSA	100 ul

[Bulk quote request](#)

Availability	1-2 weeks
Species Reactivity	Human
Format	Purified
Clonality	Rabbit Monoclonal
Isotype	Rabbit IgG
Clone Name	AODF-12
Purity	Affinity purified
UniProt	P07942
Applications	Western Blot : 1:500-1:2000
Limitations	This LAMB1 antibody is available for research use only.



Western blot testing of human A431 cell lysate with LAMB1 antibody. Predicted molecular weight ~198 kDa, observed at 220-240 kDa.

Description

Binding to cells via a high affinity receptor, laminin is thought to mediate the attachment, migration and organization of cells into tissues during embryonic development by interacting with other extracellular matrix components. Involved in the organization of the laminar architecture of cerebral cortex. It is probably required for the integrity of the basement membrane/glia limitans that serves as an anchor point for the endfeet of radial glial cells and as a physical barrier to migrating neurons. Radial glial cells play a central role in cerebral cortical development, where they act both as the proliferative unit of the cerebral cortex and a scaffold for neurons migrating toward the pial surface. [UniProt]

Application Notes

Optimal dilution of the LAMB1 antibody should be determined by the researcher.

Immunogen

A synthetic peptide specific to human Laminin beta 1 / LAMB1 was used as the immunogen for the LAMB1 antibody.

Storage

Store the LAMB1 antibody at -20oC.