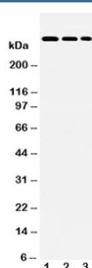


LAMA2 Antibody / Laminin alpha 2 (R31280)

Catalog No.	Formulation	Size
R31280	0.5mg/ml if reconstituted with 0.2ml sterile DI water	100 ug

Bulk quote request

Availability	1-3 business days
Species Reactivity	Human, Mouse, Rat
Format	Antigen affinity purified
Clonality	Polyclonal (rabbit origin)
Isotype	Rabbit IgG
Purity	Antigen affinity
Buffer	Lyophilized from 1X PBS with 2.5% BSA and 0.025% sodium azide/thimerosal
UniProt	P24043
Applications	Western Blot : 0.5-1ug/ml
Limitations	This LAMA2 antibody is available for research use only.



Western blot testing of LAMA2 antibody and Lane 1: HeLa; 2: A549; 3: PANC lysate.
Predicted molecular weight ~344 kDa.

Description

Laminin 2 alpha is a protein that in humans is encoded by the LAMA2 gene. This gene is mapped to 6q22.33. Laminin, an extracellular protein, is a major component of the basement membrane. It is thought to mediate the attachment, migration, and organization of cells into tissues during embryonic development by interacting with other extracellular matrix components. It is composed of three subunits, alpha, beta, and gamma, which are bound to each other by disulfide bonds into a cross-shaped molecule. This gene encodes the alpha 2 chain, which constitutes one of the subunits of laminin 2 (merosin) and laminin 4 (s-merosin). Mutations in this gene have been identified as the cause of congenital merosin-deficient muscular dystrophy. Two transcript variants encoding different proteins have been found for this gene.

Application Notes

The stated application concentrations are suggested starting points. Titration of the LAMA2 antibody may be required due to differences in protocols and secondary/substrate sensitivity.

Immunogen

Amino acids 152-170 (WILERSLDDVEYKPWQYHA-human) were used as the immunogen for this LAMA2 antibody (100% mouse homology).

Storage

After reconstitution, the LAMA2 antibody can be stored for up to one month at 4°C. For long-term, aliquot and store at -20°C. Avoid repeated freezing and thawing.