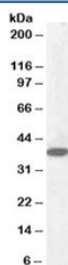


## Laforin Antibody (R33718)

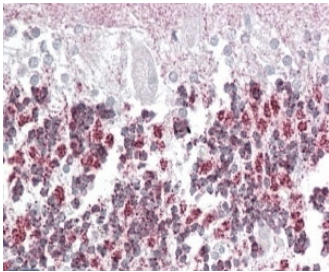
Catalog No.	Formulation	Size
R33718-100UG	0.5 mg/ml in 1X TBS, pH7.3, with 0.5% BSA (US sourced) and 0.02% sodium azide	100 ug

[Bulk quote request](#)

Availability	1-3 business days
Species Reactivity	Human
Predicted Reactivity	Cow, Dog, Mouse, Rat
Format	Antigen affinity purified
Host	Goat
Clonality	Polyclonal (goat origin)
Isotype	Goat Ig
Purity	Antigen affinity
Gene ID	7957
Applications	Western Blot : 0.1-0.3ug/ml Immunohistochemistry (FFPE) : 3-6ug/ml ELISA (peptide) LOD : 1:16000
Limitations	This Laforin antibody is available for research use only.



Western blot testing of human cerebellum lysate with Laforin antibody at 0.1ug/ml.  
Predicted molecular weight: ~37kDa.



IHC staining of FFPE human cerebellum with Laforin antibody at 4ug/ml. HIER: steamed with pH6 citrate buffer, AP-staining. Pixulate staining in the cells of the granular layer is seen.

## Description

Additional name(s) for this target protein: EPM2A; EPM2A

## Application Notes

Optimal dilution of the Laforin antibody should be determined by the researcher.

1. This Laforin antibody is specific for isoform a.

## Immunogen

Amino acids EATGHTNEMKHTTD were used as the immunogen for this Laforin antibody. This sequence is common to isoform a only.

## Storage

Aliquot and store the Laforin antibody at -20oC.