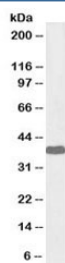


Laforin Antibody Biotin Conjugate (R33718BTN)

Catalog No.	Formulation	Size
R33718BTN	0.5 mg/ml in 1X TBS, pH7.3, with 0.5% BSA (US sourced) and 0.02% sodium azide	100 ug

[Bulk quote request](#)

Availability	1-3 business days
Species Reactivity	Human
Predicted Reactivity	Cow, Dog, Mouse, Rat
Format	Biotin Conjugate
Clonality	Polyclonal (goat origin)
Isotype	Goat Ig
Purity	Antigen affinity
Gene ID	7957
Applications	Western Blot : 1-3ug/ml Immunohistochemistry (FFPE) : suitable ELISA (peptide) LOD : 1:16000
Limitations	This Laforin antibody is available for research use only.



Western blot testing of human cerebellum lysate with biotinylated Laforin antibody at 1ug/ml. Predicted molecular weight: ~37kDa.

Description

Additional name(s) for this target protein: EPM2A; EPM2A

Application Notes

Optimal dilution of the Laforin antibody should be determined by the researcher.

1. This Laforin antibody is specific for isoform a.

Immunogen

Amino acids EATGHTNEMKHTTD were used as the immunogen for this Laforin antibody. This sequence is common to isoform a only.

Storage

Aliquot and store the Laforin antibody at -20oC.