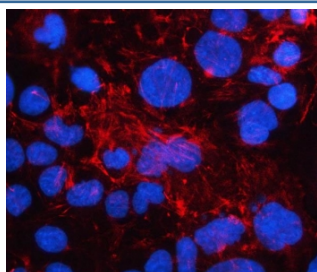


Ladinin 1 Antibody / LAD1 (RQ8464)

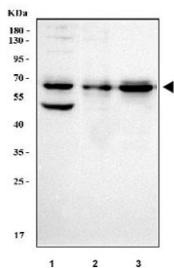
Catalog No.	Formulation	Size
RQ8464	0.5mg/ml if reconstituted with 0.2ml sterile DI water	100 ug

Bulk quote request

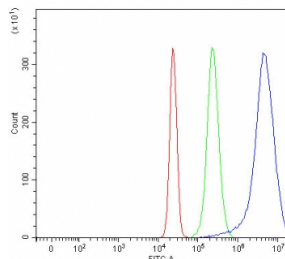
Availability	1-3 days
Species Reactivity	Human
Format	Antigen affinity purified
Host	Rabbit
Clonality	Polyclonal (rabbit origin)
Isotype	Rabbit IgG
Purity	Antigen affinity purified
Buffer	Lyophilized from 1X PBS with 2% Trehalose
UniProt	O00515
Applications	Western Blot : 0.5-1ug/ml Immunofluorescence : 5ug/ml Flow Cytometry : 1-3ug/million cells ELISA : 0.1-0.5ug/ml
Limitations	This Ladinin 1 antibody is available for research use only.



Immunofluorescent staining of FFPE human Caco-2 cells with Ladinin 1 antibody (red) and DAPI nuclear stain (blue). HIER: steam section in pH6 citrate buffer for 20 min.



Western blot testing of human 1) MCF7, 2) HeLa and 3) RT4 cell lysate with Ladinin 1 antibody. Predicted molecular weight ~57 kDa.



Flow cytometry testing of fixed and permeabilized human HepG2 cells with Ladinin 1 antibody at 1ug/million cells (blocked with goat sera); Red=cells alone, Green=isotype control, Blue= Ladinin 1 antibody.

Description

Ladinin-1 is a protein that in humans is encoded by the LAD1 gene. The protein encoded by this gene may be an anchoring filament that is a component of basement membranes. It may contribute to the stability of the association of the epithelial layers with the underlying mesenchyme.

Application Notes

Optimal dilution of the Ladinin 1 antibody should be determined by the researcher.

Immunogen

An E.coli-derived human recombinant protein (amino acids E60-Q483) was used as the immunogen for the Ladinin 1 antibody.

Storage

After reconstitution, the Ladinin 1 antibody can be stored for up to one month at 4oC. For long-term, aliquot and store at -20oC. Avoid repeated freezing and thawing.