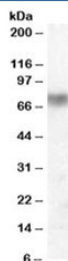


Lactoperoxidase Antibody (R34455)

Catalog No.	Formulation	Size
R34455-100UG	0.5 mg/ml in 1X TBS, pH7.3, with 0.5% BSA (US sourced) and 0.02% sodium azide	100 ug

[Bulk quote request](#)

Availability	1-3 business days
Species Reactivity	Human
Predicted Reactivity	Cow, Mouse, Pig, Rat
Format	Antigen affinity purified
Host	Goat
Clonality	Polyclonal (goat origin)
Isotype	Goat Ig
Purity	Antigen affinity
Gene ID	4025
Applications	Western Blot : 0.01-0.03ug/ml ELISA (peptide) LOD : 1:128000
Limitations	This Lactoperoxidase antibody is available for research use only.



Western blot testing of human lung lysate with Lactoperoxidase antibody at 0.01ug/ml.
Predicted molecular weight: ~80kDa.

Description

Additional name(s) for this target protein: SPO, salivary peroxidase; LPO

Application Notes

Optimal dilution of the Lactoperoxidase antibody should be determined by the researcher.

1. This Lactoperoxidase antibody is specific for isoform 1.

Immunogen

Amino acids KHAKGRTRTAIRN were used as the immunogen for this Lactoperoxidase antibody.

Storage

Aliquot and store the Lactoperoxidase antibody at -20oC.