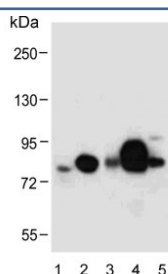


## Lactoferrin Antibody / LTF (F54310)

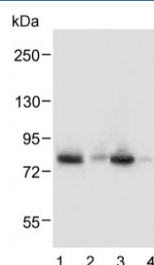
Catalog No.	Formulation	Size
F54310-0.4ML	In 1X PBS, pH 7.4, with 0.09% sodium azide	0.4 ml
F54310-0.08ML	In 1X PBS, pH 7.4, with 0.09% sodium azide	0.08 ml

[Bulk quote request](#)

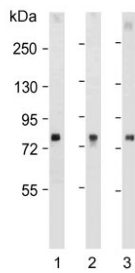
<b>Availability</b>	1-3 business days
<b>Species Reactivity</b>	Human, Mouse
<b>Format</b>	Purified
<b>Host</b>	Rabbit
<b>Clonality</b>	Polyclonal (rabbit origin)
<b>Isotype</b>	Rabbit Ig
<b>Purity</b>	Antigen affinity purified
<b>UniProt</b>	P02788
<b>Localization</b>	Nuclear, cytoplasmic
<b>Applications</b>	Western Blot : 1:500-1:2000 Flow Cytometry : 1:25 (1x10 <sup>6</sup> cells)
<b>Limitations</b>	This Lactoferrin antibody is available for research use only.



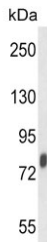
Western blot testing of human 1) A549, 2) plasma, 3) fetal kidney, 4) breast and 5) uterus lysate with Lactoferrin antibody. Predicted molecular weight: ~78 kDa (isoform 1) and ~73 kDa (isoforms 2).



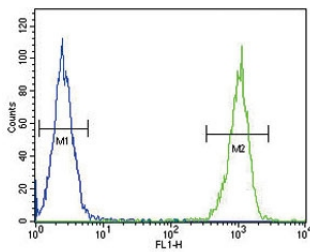
Western blot testing of human 1) plasma, 2) fetal kidney, 3) uterus and 4) skeletal muscle lysate with Lactoferrin antibody. Predicted molecular weight: ~78 kDa (isoform 1) and ~73 kDa (isoforms 2).



Western blot testing of human 1) plasma, 2) HeLa and 3) uterus lysate with Lactoferrin antibody. Predicted molecular weight: ~78 kDa (isoform 1) and ~73 kDa (isoforms 2).



Western blot testing of mouse spleen lysate with Lactoferrin antibody. Predicted molecular weight: ~78 kDa (isoform 1) and ~73 kDa (isoforms 2).



Flow cytometry testing of fixed and permeabilized human MDA-MB-231 cells with Lactoferrin antibody; Blue=isotype control, Green= Lactoferrin antibody.

## Description

LTF is found in the secondary granules of neutrophils. The protein is a major iron-binding protein in milk and body secretions with an antimicrobial activity, making it an important component of the non-specific immune system. The protein demonstrates a broad spectrum of properties, including regulation of iron homeostasis, host defense against a broad range of microbial infections, anti-inflammatory activity, regulation of cellular growth and differentiation and protection against cancer development and metastasis.

## Application Notes

The stated application concentrations are suggested starting points. Titration of the Lactoferrin antibody may be required due to differences in protocols and secondary/substrate sensitivity.

## Immunogen

A portion of amino acids from the human protein was used as the immunogen for the Lactoferrin Antibody.

## Storage

Aliquot the Lactoferrin antibody and store frozen at -20°C or colder. Avoid repeated freeze-thaw cycles.

