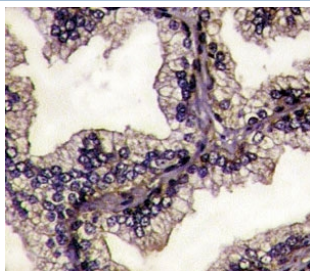


Lactoferrin Antibody (F50631)

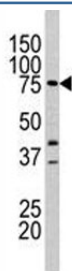
Catalog No.	Formulation	Size
F50631-0.4ML	In 1X PBS, pH 7.4, with 0.09% sodium azide	0.4 ml
F50631-0.08ML	In 1X PBS, pH 7.4, with 0.09% sodium azide	0.08 ml

[Bulk quote request](#)

Availability	1-3 business days
Species Reactivity	Human, Mouse
Format	Purified
Host	Rabbit
Clonality	Polyclonal (rabbit origin)
Isotype	Rabbit Ig
Purity	Purified
UniProt	P02788
Applications	IHC (Paraffin) : 1:10-1:50 Western Blot : 1:50-1:100
Limitations	This Lactoferrin antibody is available for research use only.



IHC analysis of FFPE prostate carcinoma tissue stained with Lactoferrin antibody.



Western blot analysis of Lactoferrin antibody (1:60 dilution) and mouse heart tissue lysate. Predicted molecular weight: ~78/73kDa (isoforms 1/2).

Description

This protein is a member of the transferrin family of metal-binding proteins found in milk and other secretory fluids and also in blood. It shows multifunctional properties of which the bacteriostatic and bactericidal effects are the best known.

Application Notes

Titration of the Lactoferrin antibody may be required due to differences in protocols and secondary/substrate sensitivity.

Immunogen

A portion of amino acids 219-248 from the human protein was used as the immunogen for this Lactoferrin antibody.

Storage

Aliquot the Lactoferrin antibody and store frozen at -20oC or colder. Avoid repeated freeze-thaw cycles.