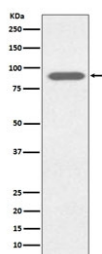


## Lactoferrin Antibody [clone ABOI-12] (RQ5018)

Catalog No.	Formulation	Size
RQ5018	Antibody in PBS with 0.02% sodium azide, 50% glycerol and 0.4-0.5mg/ml BSA	100 ul

[Bulk quote request](#)

Availability	1-2 weeks
Species Reactivity	Human
Format	Purified
Host	Rabbit
Clonality	Rabbit Monoclonal
Isotype	Rabbit IgG
Clone Name	ABOI-12
Purity	Affinity purified
UniProt	P02788
Applications	Western Blot : 1:500-1:2000 Immunohistochemistry (FFPE) : 1:50-1:200 Immunoprecipitation : 1:50
Limitations	This Lactoferrin antibody is available for research use only.



Western blot testing of human HeLa cell lysate with Lactoferrin antibody. Predicted molecular weight ~78 kDa.

## Description

Lactotransferrin is a major iron-binding and multifunctional protein found in exocrine fluids such as breast milk and mucosal secretions. [UniProt]

## Application Notes

Optimal dilution of the Lactoferrin antibody should be determined by the researcher.

## Immunogen

A synthetic peptide specific to human Lactoferrin / LTF was used as the immunogen for the Lactoferrin antibody.

## Storage

Store the Lactoferrin antibody at -20oC.