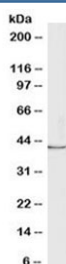


## Lactadherin Antibody (R36450)

Catalog No.	Formulation	Size
R36450-100UG	0.5 mg/ml in 1X TBS, pH7.3, with 0.5% BSA (US sourced) and 0.02% sodium azide	100 ug

[Bulk quote request](#)

Availability	1-3 business days
Species Reactivity	Human
Format	Antigen affinity purified
Clonality	Polyclonal (goat origin)
Isotype	Goat Ig
Purity	Antigen affinity
UniProt	Q08431
Applications	Western Blot : 1-3ug/ml ELISA (peptide) LOD : 1:16000
Limitations	This Lactadherin antibody is available for research use only.



Western blot testing of human MCF7 cell lysate with Lactadherin antibody at 1ug/ml.  
Predicted molecular weight: ~43 kDa.

## Description

Additional name(s) for this target protein: MFGE8 antibody; Milk Fat Globule-EGF factor 8 protein

## Application Notes

Optimal dilution of the Lactadherin antibody should be determined by the researcher.

## Immunogen

Amino acids KNNSIPDKQITAS were used as the immunogen for this Lactadherin antibody.

## Storage

Aliquot and store the Lactadherin antibody at -20oC.