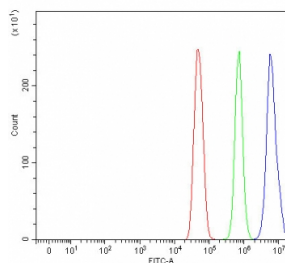


## L3MBTL3 Antibody / Lethal(3)malignant brain tumor-like protein 3 (RQ8416)

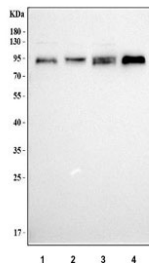
Catalog No.	Formulation	Size
RQ8416	0.5mg/ml if reconstituted with 0.2ml sterile DI water	100 ug

[Bulk quote request](#)

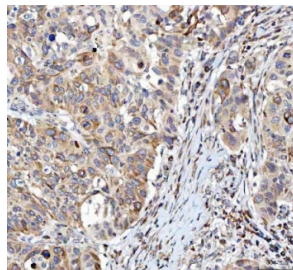
<b>Availability</b>	1-3 business days
<b>Species Reactivity</b>	Human
<b>Format</b>	Antigen affinity purified
<b>Host</b>	Rabbit
<b>Clonality</b>	Polyclonal (rabbit origin)
<b>Isotype</b>	Rabbit IgG
<b>Purity</b>	Antigen affinity purified
<b>Buffer</b>	Lyophilized from 1X PBS with 2% Trehalose
<b>UniProt</b>	Q96JM7
<b>Applications</b>	Western Blot : 0.5-1ug/ml Immunohistochemistry (FFPE) : 2-5ug/ml Flow Cytometry : 1-3ug/million cells ELISA : 0.1-0.5ug/ml
<b>Limitations</b>	This L3MBTL3 antibody is available for research use only.



Flow cytometry testing of fixed and permeabilized human U-251 cells with L3MBTL3 antibody at 1ug/million cells (blocked with goat sera); Red=cells alone, Green=isotype control, Blue= L3MBTL3 antibody.



Western blot testing of human 1) Jurkat, 2) HEL, 3) 293T and 4) ThP-1 cell lysate with L3MBTL3 antibody. Predicted molecular weight ~88 kDa and ~86 kDa (two isoforms).



IHC staining of FFPE human bladder urothelial carcinoma tissue with L3MBTL3 antibody. HIER: boil tissue sections in pH8 EDTA for 20 min and allow to cool before testing.

## Description

This gene encodes a member of the malignant brain tumor (MBT) family of chromatin interacting transcriptional repressors. Members of this family function as methyl-lysine readers, which recognize methylated lysine residues on histone protein tails, and are associated with the repression of gene expression. The encoded protein may regulate hematopoiesis. Homozygous deletion of this gene has been observed in human patients with medulloblastoma.

## Application Notes

Optimal dilution of the L3MBTL3 antibody should be determined by the researcher.

## Immunogen

An E.coli-derived human recombinant protein (Q11-R686) was used as the immunogen for the L3MBTL3 antibody.

## Storage

After reconstitution, the L3MBTL3 antibody can be stored for up to one month at 4°C. For long-term, aliquot and store at -20°C. Avoid repeated freezing and thawing.