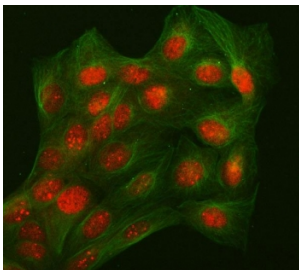


L3MBTL2 Antibody / Lethal(3)malignant brain tumor-like protein 2 (RQ8590)

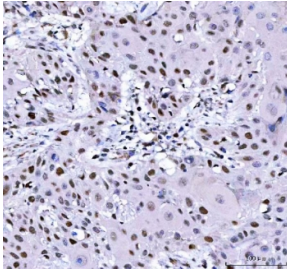
Catalog No.	Formulation	Size
RQ8590	0.5mg/ml if reconstituted with 0.2ml sterile DI water	100 ug

[Bulk quote request](#)

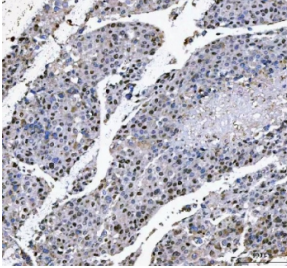
Availability	1-3 days
Species Reactivity	Human
Format	Antigen affinity purified
Host	Rabbit
Clonality	Polyclonal (rabbit origin)
Isotype	Rabbit IgG
Purity	Antigen affinity purified
Buffer	Lyophilized from 1X PBS with 2% Trehalose
UniProt	Q969R5
Applications	Western Blot : 0.5-1ug/ml Immunohistochemistry (FFPE) : 2-5ug/ml Immunofluorescence : 5ug/ml ELISA : 0.1-0.5ug/ml
Limitations	This L3MBTL2 antibody is available for research use only.



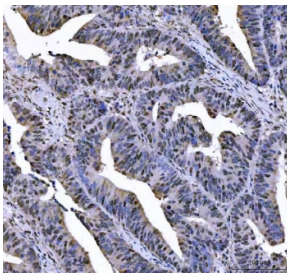
Immunofluorescent staining of FFPE human U-2 OS cells with L3MBTL2 antibody (red) and Beta Tubulin mAb (green). HIER: steam section in pH6 citrate buffer for 20 min.



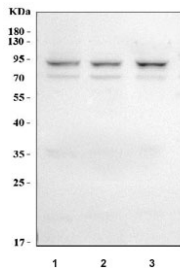
IHC staining of FFPE human esophageal squamous carcinoma tissue with L3MBTL2 antibody. HIER: boil tissue sections in pH8 EDTA for 20 min and allow to cool before testing.



IHC staining of FFPE human liver cancer tissue with L3MBTL2 antibody. HIER: boil tissue sections in pH8 EDTA for 20 min and allow to cool before testing.



IHC staining of FFPE human colorectal adenocarcinoma tissue with L3MBTL2 antibody. HIER: boil tissue sections in pH8 EDTA for 20 min and allow to cool before testing.



Western blot testing of 1) human 293T, 2) human HeLa and 3) human MOLT4 cell lysate with L3MBTL2 antibody. Predicted molecular weight: 79 kDa and 69 kDa (multiple isoforms).

Description

Lethal(3)malignant brain tumor-like 2 protein is a protein that in humans is encoded by the L3MBTL2 gene. Putative Polycomb group (PcG) protein. PcG proteins maintain the transcriptionally repressive state of genes, probably via a modification of chromatin, rendering it heritably changed in its expressibility. Its association with achromatin-remodeling complex suggests that it may contribute to prevent expression of genes that trigger the cell into mitosis.

Application Notes

Optimal dilution of the L3MBTL2 antibody should be determined by the researcher.

Immunogen

An E.coli-derived human recombinant protein (amino acids E208-Q701) was used as the immunogen for the L3MBTL2 antibody.

Storage

After reconstitution, the L3MBTL2 antibody can be stored for up to one month at 4°C. For long-term, aliquot and store at -20°C. Avoid repeated freezing and thawing.

