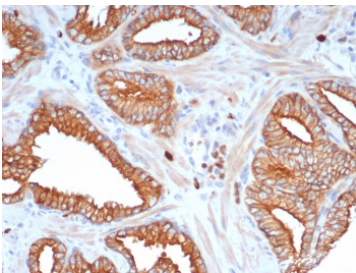


## L1TD1 Antibody / ECAT11 [clone L1TD1/7941] (V4665)

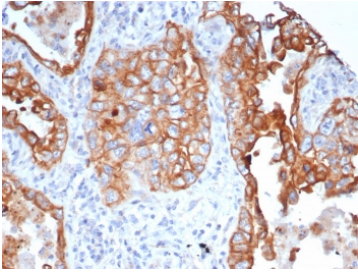
Catalog No.	Formulation	Size
V4665-100UG	0.2 mg/ml in 1X PBS with 0.1 mg/ml BSA (US sourced), 0.05% sodium azide	100 ug
V4665-20UG	0.2 mg/ml in 1X PBS with 0.1 mg/ml BSA (US sourced), 0.05% sodium azide	20 ug
V4665SAF-100UG	1 mg/ml in 1X PBS; BSA free, sodium azide free	100 ug

[Bulk quote request](#)

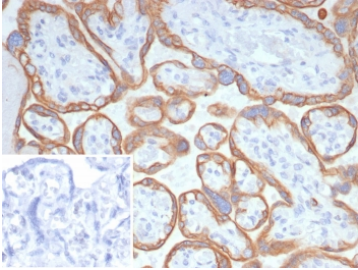
<b>Availability</b>	1-3 business days
<b>Species Reactivity</b>	Human
<b>Format</b>	Purified
<b>Host</b>	Mouse
<b>Clonality</b>	Monoclonal (mouse origin)
<b>Isotype</b>	Mouse IgG2, kappa
<b>Clone Name</b>	L1TD1/7941
<b>Purity</b>	Protein A/G affinity
<b>UniProt</b>	Q5T7N2
<b>Localization</b>	Cytoplasm, Secreted
<b>Applications</b>	Immunohistochemistry (FFPE) : 1-2ug/ml for 30 min at RT
<b>Limitations</b>	This L1TD1 antibody is available for research use only.



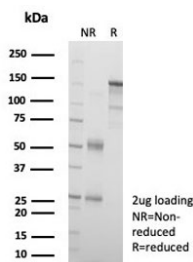
IHC staining of FFPE human prostate tissue with L1TD1 antibody (clone L1TD1/7941).  
HIER: boil tissue sections in pH 9 10mM Tris with 1mM EDTA for 20 min and allow to cool before testing.



IHC staining of FFPE human lung tissue with L1TD1 antibody (clone L1TD1/7941).  
HIER: boil tissue sections in pH 9 10mM Tris with 1mM EDTA for 20 min and allow to cool before testing.



IHC staining of FFPE human placental tissue with L1TD1 antibody (clone L1TD1/7941).  
Inset: PBS used in place of primary Ab (secondary Ab negative control). HIER: boil tissue sections in pH 9 10mM Tris with 1mM EDTA for 20 min and allow to cool before testing.



SDS-PAGE analysis of purified, BSA-free L1TD1 antibody (clone L1TD1/7941) as confirmation of integrity and purity.

## Description

L1TD1 (LINE-1 type transposase domain containing 1), also known as ECAT11 (ES cell-associated protein 11), is an 865 amino acid protein that belongs to the transposase 22 family and is encoded by a gene that maps to human chromosome 1p31.3. Chromosome 1 spans 260 million base pairs, contains over 3,000 genes and comprises nearly 8% of the human genome. Chromosome 1 houses a large number of disease-associated genes, including those that are involved in familial adenomatous polyposis, Stickler syndrome, Parkinson s disease, Gaucher disease, schizophrenia and Usher syndrome. Aberrations in chromosome 1 are found in a variety of cancers, including head and neck cancer, malignant melanoma and multiple myeloma.

## Application Notes

Optimal dilution of the L1TD1 antibody should be determined by the researcher.

## Immunogen

A recombinant fragment of human L1TD1 protein was used as the immunogen for the L1TD1 antibody.

## Storage

Aliquot the L1TD1 antibody and store frozen at -20oC or colder. Avoid repeated freeze-thaw cycles.

