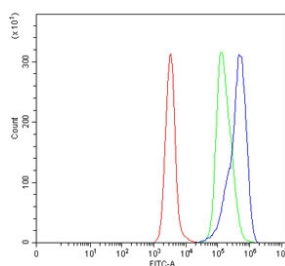


L1RE1 Antibody / LINE-1 retrotransposable element ORF1 protein (RQ6886)

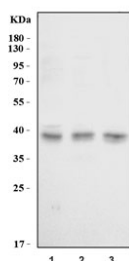
Catalog No.	Formulation	Size
RQ6886	0.5mg/ml if reconstituted with 0.2ml sterile DI water	100 ug

[Bulk quote request](#)

Availability	1-3 business days
Species Reactivity	Human
Format	Antigen affinity purified
Host	Rabbit
Clonality	Polyclonal (rabbit origin)
Isotype	Rabbit IgG
Purity	Antigen affinity purified
Buffer	Lyophilized from 1X PBS with 2% Trehalose
UniProt	Q9UN81
Applications	Western Blot : 1-2ug/ml Flow Cytometry : 1-3ug/million cells Direct ELISA : 0.1-0.5ug/ml
Limitations	This L1RE1 antibody is available for research use only.



Flow cytometry testing of human Daudi cells with L1RE1 antibody at 1ug/million cells (blocked with goat sera); Red=cells alone, Green=isotype control, Blue= L1RE1 antibody.



Western blot testing of human 1) 293T, 2) A431 and 3) HeLa cell lysate with L1RE1 antibody. Predicted molecular weight ~40 kDa.

Description

Nucleic acid-binding protein which is essential for retrotransposition of LINE-1 elements in the genome. May function as a nucleic acid chaperone binding its own transcript and therefore preferentially mobilizing the transcript from which they are encoded.

Application Notes

Optimal dilution of the L1RE1 antibody should be determined by the researcher.

Immunogen

Recombinant human protein (amino acids Q147-E324) was used as the immunogen for the L1RE1 antibody.

Storage

After reconstitution, the L1RE1 antibody can be stored for up to one month at 4oC. For long-term, aliquot and store at -20oC. Avoid repeated freezing and thawing.