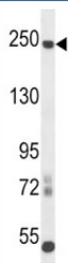


L1CAM Antibody / NCAM-L1 / CD171 (F44598)

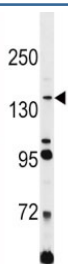
Catalog No.	Formulation	Size
F44598-0.4ML	In 1X PBS, pH 7.4, with 0.09% sodium azide	0.4 ml
F44598-0.08ML	In 1X PBS, pH 7.4, with 0.09% sodium azide	0.08 ml

[Bulk quote request](#)

Availability	1-3 business days
Species Reactivity	Human, Mouse
Predicted Reactivity	Rat
Format	Antigen affinity purified
Host	Rabbit
Clonality	Polyclonal (rabbit origin)
Isotype	Rabbit Ig
Purity	Antigen affinity
UniProt	P32004
Applications	Western Blot : 1:1000 (1)
Limitations	This L1CAM antibody is available for research use only.



L1CAM antibody western blot analysis in mouse cerebellum tissue lysate. Expected molecular weight of glycosylated protein is 200-240 kDa.



L1CAM antibody western blot analysis in Jurkat lysate. Expected molecular weight of unglycosylated protein is 140-150 kDa.

Description

L1CAM is an axonal glycoprotein belonging to the immunoglobulin supergene family. The ectodomain, consisting of several immunoglobulin-like domains and fibronectin-like repeats (type III), is linked via a single transmembrane sequence to a conserved cytoplasmic domain. This cell adhesion molecule plays an important role in nervous system development, including neuronal migration and differentiation. Mutations in the gene cause three X-linked neurological syndromes known by the acronym CRASH (corpus callosum hypoplasia, retardation, aphasia, spastic paraplegia and hydrocephalus). Alternative splicing of a neuron-specific exon is thought to be functionally relevant.

Application Notes

Titration of the L1CAM antibody may be required due to differences in protocols and secondary/substrate sensitivity.

1. Cleavage by ADAM10 results in 180 and 40 kDa bands while cleavage by Plasmin results in 140 and 80 kDa bands.

Immunogen

A portion of amino acids 1154-1182 from the human protein was used as the immunogen for this L1CAM antibody.

Storage

Aliquot the L1CAM antibody and store frozen at -20oC or colder. Avoid repeated freeze-thaw cycles.