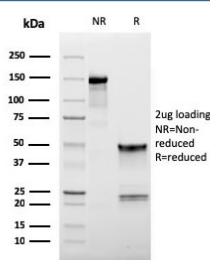


L-Selectin Antibody / CD62L [clone LAM1-116] (V8076)

Catalog No.	Formulation	Size
V8076-100UG	0.2 mg/ml in 1X PBS with 0.1 mg/ml BSA (US sourced) and 0.05% sodium azide	100 ug
V8076-20UG	0.2 mg/ml in 1X PBS with 0.1 mg/ml BSA (US sourced) and 0.05% sodium azide	20 ug
V8076SAF-100UG	1 mg/ml in 1X PBS; BSA free, sodium azide free	100 ug

[Bulk quote request](#)

Availability	1-3 business days
Species Reactivity	Human
Format	Purified
Host	Mouse
Clonality	Monoclonal (mouse origin)
Isotype	Mouse IgG1, kappa
Clone Name	LAM1-116
Purity	Protein G affinity chromatography
UniProt	P14151
Applications	ELISA (order BSA-free Format For Coating) : Flow Cytometry : 1-2ug/10 ⁶ cells in 0.1ml Western Blot : 1-2ug/ml
Limitations	This L-Selectin antibody is available for research use only.



SDS-PAGE analysis of purified, BSA-free L-Selectin antibody (clone LAM1-116) as confirmation of integrity and purity.

Description

Selectins, also designated CD62 antigens, comprise a family of carbohydrate-binding proteins involved in mediating cellular interactions with leukocytes. L-Selectin (also designated LECAM-1 or CD62L) is expressed on the majority of B and naive T cells and on most monocytes, neutrophils and eosinophils. L-Selectin interacts with specific carbohydrates expressed by activated endothelial cells. P-Selectin (also designated GMP-140 or CD62P), expressed on activated platelets and endothelial cells, and E-Selectin (also designated ELMA-1 or CD62E), expressed on endothelial cells, exhibit overlapping ligand specificities. Both recognize sialyl-Le (x) as a ligand and bind to specific carbohydrates on neutrophils and monocytes.

Application Notes

Optimal dilution of the L-Selectin antibody should be determined by the researcher.

Immunogen

Supernatant from phorbol myristic acid activated human peripheral blood leukocytes was used as the immunogen for the L-Selectin antibody.

Storage

Store the L-Selectin antibody at 2-8oC (with azide) or aliquot and store at -20oC or colder (without azide).