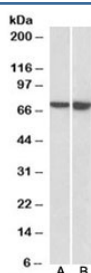


L-Plastin Antibody (R34226)

Catalog No.	Formulation	Size
R34226-100UG	0.5 mg/ml in 1X TBS, pH7.3, with 0.5% BSA (US sourced) and 0.02% sodium azide	100 ug

[Bulk quote request](#)

Availability	1-3 business days
Species Reactivity	Human
Format	Antigen affinity purified
Clonality	Polyclonal (goat origin)
Isotype	Goat Ig
Purity	Antigen affinity
Gene ID	3936
Applications	Western Blot : 0.5-3ug/ml ELISA (peptide) LOD : 1:16000
Limitations	This L-Plastin antibody is available for research use only.



Western blot testing of Daudi [A] and U937 [B] lysates with L-Plastin antibody at 0.5ug/ml. Predicted molecular weight: ~70 kDa.

Description

Additional name(s) for this target protein: Lymphocyte cytosolic protein-1; LCP1

Application Notes

Optimal dilution of the L-Plastin antibody should be determined by the researcher.

Immunogen

Amino acids HLENAGCNKIGNFST were used as the immunogen for this L-Plastin antibody.

Storage

Aliquot and store the L-Plastin antibody at -20oC.