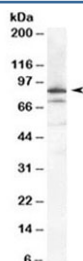


Ku80 Antibody / XRCC5 (R35952)

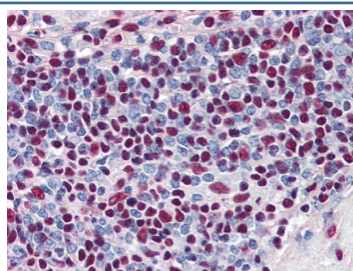
| Catalog No. | Formulation | Size |
|--------------|---|--------|
| R35952-100UG | 0.5 mg/ml in 1X TBS, pH7.3, with 0.5% BSA (US sourced) and 0.02% sodium azide | 100 ug |

[Bulk quote request](#)

| | |
|--------------------|---|
| Availability | 1-3 business days |
| Species Reactivity | Human |
| Format | Antigen affinity purified |
| Clonality | Polyclonal (goat origin) |
| Isotype | Goat Ig |
| Purity | Antigen affinity |
| Gene ID | 7520 |
| Localization | Nuclear |
| Applications | Western Blot : 0.1-0.3ug/ml IHC (FFPE) : 5ug/ml ELISA (peptide) LOD : 1:16000 |
| Limitations | This Ku80 antibody is available for research use only. |



Western blot testing of HeLa cell lysate with Ku80 antibody at 0.1ug/ml. Predicted molecular weight 80~86 kDa, both observed bands are blocked by the immunizing peptide.



IHC testing of FFPE human spleen tissue with Ku80 antibody at 5ug/ml. Required HIER: steamed antigen retrieval with pH6 citrate buffer; AP-staining.

Description

Additional name(s) for this target protein: XRCC5, X-ray repair complementing defective repair in Chinese hamster cells 5

Application Notes

Optimal dilution of the Ku80 antibody should be determined by the researcher.

Immunogen

Amino acids SLAKKDEKTDLED were used as the immunogen for this Ku80 antibody.

Storage

Aliquot and store the Ku80 antibody at -20oC.