

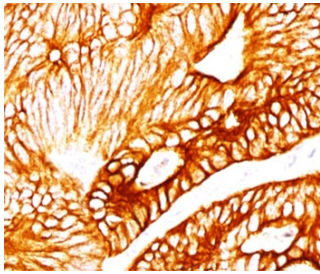
KRT8 Antibody [clone K8.8] (V2173)

Catalog No.	Formulation	Size
V2173-100UG	0.2 mg/ml in 1X PBS with 0.1 mg/ml BSA (US sourced) and 0.05% sodium azide	100 ug
V2173-20UG	0.2 mg/ml in 1X PBS with 0.1 mg/ml BSA (US sourced) and 0.05% sodium azide	20 ug
V2173SAF-100UG	1 mg/ml in 1X PBS; BSA free, sodium azide free	100 ug
V2173IHC-7ML	Prediluted in 1X PBS with 0.1 mg/ml BSA (US sourced) and 0.05% sodium azide; *For IHC use only*	7 ml

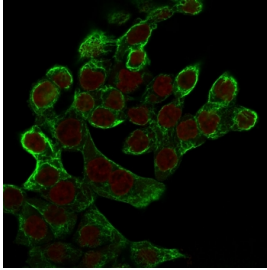
 Citations (3)

[Bulk quote request](#)

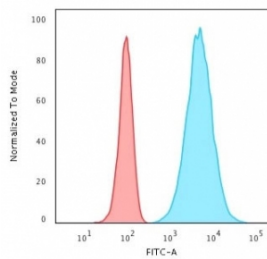
Species Reactivity	Human
Format	Purified
Host	Mouse
Clonality	Monoclonal (mouse origin)
Isotype	Mouse IgG1, kappa
Clone Name	K8.8
Purity	Protein G affinity chromatography
Buffer	1X PBS, pH 7.4
Gene ID	3856
Localization	Cytoplasmic
Applications	Western Blot : 1-2ug/ml Flow Cytometry : 1-2ug/million cells Immunofluorescence : 1-2ug/ml Immunohistochemistry (FFPE) : 0.5-1ug/ml for 30 min at RT
Limitations	This KRT8 antibody is available for research use only.



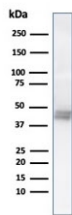
IHC testing of human colon carcinoma stained with KRT8 antibody (K8.8).



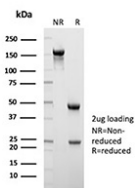
Immunofluorescent staining of permeabilized human HCT-116 cells with KRT8 antibody (clone K8.8, green) and Reddot nuclear stain (red).



Flow cytometry testing of permeabilized human HeLa cells with KRT8 antibody (clone K8.8); Red=isotype control, Blue= KRT8 antibody.



Western blot testing of HCT-116 cell lysate using KRT8 antibody (clone K8.8) at 1ug/ml. Observed molecular weight: 46~50kDa.



SDS-PAGE analysis of purified, BSA-free KRT8 antibody (clone K8.8) as confirmation of integrity and purity.

Description

KRT8, also called Cytokeratin 8, is a low molecular weight keratin of approximately 50 kDa. It participates in cellular differentiation and signal transduction, protects against apoptosis, stress and injury, and helps maintain cellular structural integrity. KRT8 is primarily found in the non-squamous epithelia and is present in majority of adenocarcinomas and ductal carcinomas. It is absent in squamous cell carcinomas.

Application Notes

Differences in protocols and secondaries may require the KRT8 antibody to be titered for optimal performance.

1. FFPE staining requires boiling tissue sections in 10mM Citrate Buffer, pH 6.0, for 10-20 min followed by cooling at RT for 20 minutes.
2. The prediluted format is supplied in a dropper bottle and is optimized for use in IHC. After epitope retrieval step (if required), drip mAb solution onto the tissue section and incubate at RT for 30 min.

Immunogen

Human carcinoma keratin was used as the immunogen for this KRT8 antibody.

Storage

Store the KRT8 antibody at 2-8oC (with azide) or aliquot and store at -20oC or colder (without azide).

References (1)